



— DESIGNER SERIES SPECIFICATIONS GUIDE —

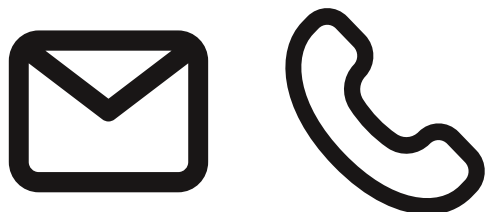


THOUGHTFULLY CRAFTED
TO SUIT ANY STYLE

TABLE OF CONTENTS

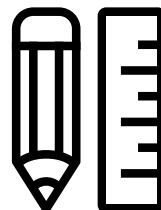
ITEM	PAGE
Information	A
Material Specifications	A
Cabinet Specifications	A
Door & Drawer Reveal Dimensions	A
Cabinet Dimensions	A
Door Styles & Finishes	B
Doors & Drawer Fronts	B
Base Cabinets	C
Wall Cabinets	D
Tall Cabinets	E
Standard Vanity Cabinets	F
ADA Kitchen Cabinets	G
ADA Vanity Cabinets	H
Color-Matched Accessories	I
Interior Accessories and Hardware	J
Cabinet Adjustments	K
Quality & Care Guide	L
Warranty	M
Minnesota Disclosure Health Notice	N

INFORMATION



REACH OUT

You can reach out to **studiodesigncabinets@magickwoods.com** or call **(844) 877-0002** to begin your registration process.



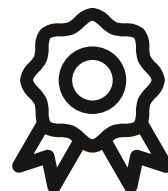
FREE DESIGN

We offer quick turnaround project and custom room layout designs!



SHIPPING

Cabinets ship fully assembled and ready to be installed. We can handle any type of orders, whether it's a kitchen at a time or a full truckload. Contact your field representative for details.



WARRANTY

Our kitchen and bath cabinets are covered under our limited lifetime warranty. For more details, visit **www.flooranddecor.com** or contact us at **studiodesigncabinets@magickwoods.com** or call **(844) 877-0002**.

MATERIAL SPECIFICATIONS

MATERIAL CHARACTERISTICS:

We offer a diverse selection of materials, including premium painted MDF, textured melamine, DLV laminates, and several wood species, each with its own distinctive characteristics. All our paints and stains are finished with a UV-protective top coat, which helps slow aging and fading caused by sun exposure.

Our natural wood options showcase unique grain patterns and color variations that reflect the environment in which the wood grew. Factors such as soil minerals, climate, and moisture influence these characteristics, resulting in one-of-a-kind cabinetry pieces. While we carefully match wood during production, the inherent variations mean no two pieces will ever be identical in pattern or hue.

Wood is a living material and may expand or contract with changes in humidity and temperature—natural behaviors that highlight its authenticity rather than defects. We use premium stains and finishes to enhance the beauty of each wood species and protect it against daily wear. Over time, exposure to light may deepen the wood's color, a normal and expected process.

Our engineered materials, such as textured melamine and DLV laminates, are designed for durability and easy care, offering alternatives that are resistant to warping, scratches, and stains. For optimal results, we recommend regularly updating product samples to reflect natural changes over time and following proper care guidelines to maintain the longevity of your cabinetry. Variations in natural materials are part of their charm and are not grounds for replacement or credit.

In line with our commitment to continuous product improvement, we may adjust design specifications and materials as necessary. If different materials are used, they will be of equal or superior quality, maintaining our high standards.

BIRCH

Birch wood is known for its smooth, even grain and light, creamy color, ranging from pale yellow to reddish-brown hues. It often exhibits small knots, mineral streaks, or subtle variations in tone, which add natural character to its appearance. These features make birch a versatile and popular choice for cabinetry, blending seamlessly into both traditional and modern designs.

LAMINATE (DLV)

Our laminated five-piece doors are crafted with wraps that contour around each linear component and insert panel, which are then assembled into a cohesive door or drawer front. This process enhances the door's design, achieving clean lines and well-defined features for a polished, stylish appearance.

MATERIAL SPECIFICATIONS

MDF

Our one-piece MDF doors are expertly shaped using precision routers and advanced tooling to create exact profiles and clean, defined edges. Each door is finished with premium polyurethane paint, delivering a smooth, durable surface that resists wear and maintains its polished look over time. This process ensures a high-quality product that combines precision craftsmanship with lasting performance.

RIFT CUT OAK

Our rift cut oak doors highlight the distinctive straight grain patterns and subtle medullary rays characteristic of this premium cut. The wood's warm, golden tones and refined textures are beautifully preserved, creating a timeless and elegant look. The finish not only enhances the intricate grain details but also provides durable protection, making these doors a perfect blend of natural beauty and long-lasting performance.

TEXTURED MELAMINE

Our textured melamine doors are crafted using advanced manufacturing techniques to create a realistic woodgrain texture with consistent quality. The melamine surface is fused to a dense core, ensuring resistance to warping. Built for durability, these doors are scratch-resistant, moisture-resistant, and easy to maintain, making them perfect for high-traffic areas.

CABINET SPECIFICATIONS

KITCHEN CABINETS

3/16" hardboard back panel in dado join with solid 5/8" thick mounting strips.

Full-access construction eliminates the face frame around cabinet boxes for a modern look & additional storage space.

3/4" full-depth shelves for heavier storage capacity.

Adjustable legs provide easy levelling on uneven floors and minimize water damage.

5/8" side gables for superior strength & durability.

Water & stain-resistant melamine interior cabinet boxes with designer linen pattern interior.

Easy-to-install adjustable tool-free press-in hinges. Soft-closing hinges & slides.

SOLID WOOD DOVETAIL DRAWER BOX

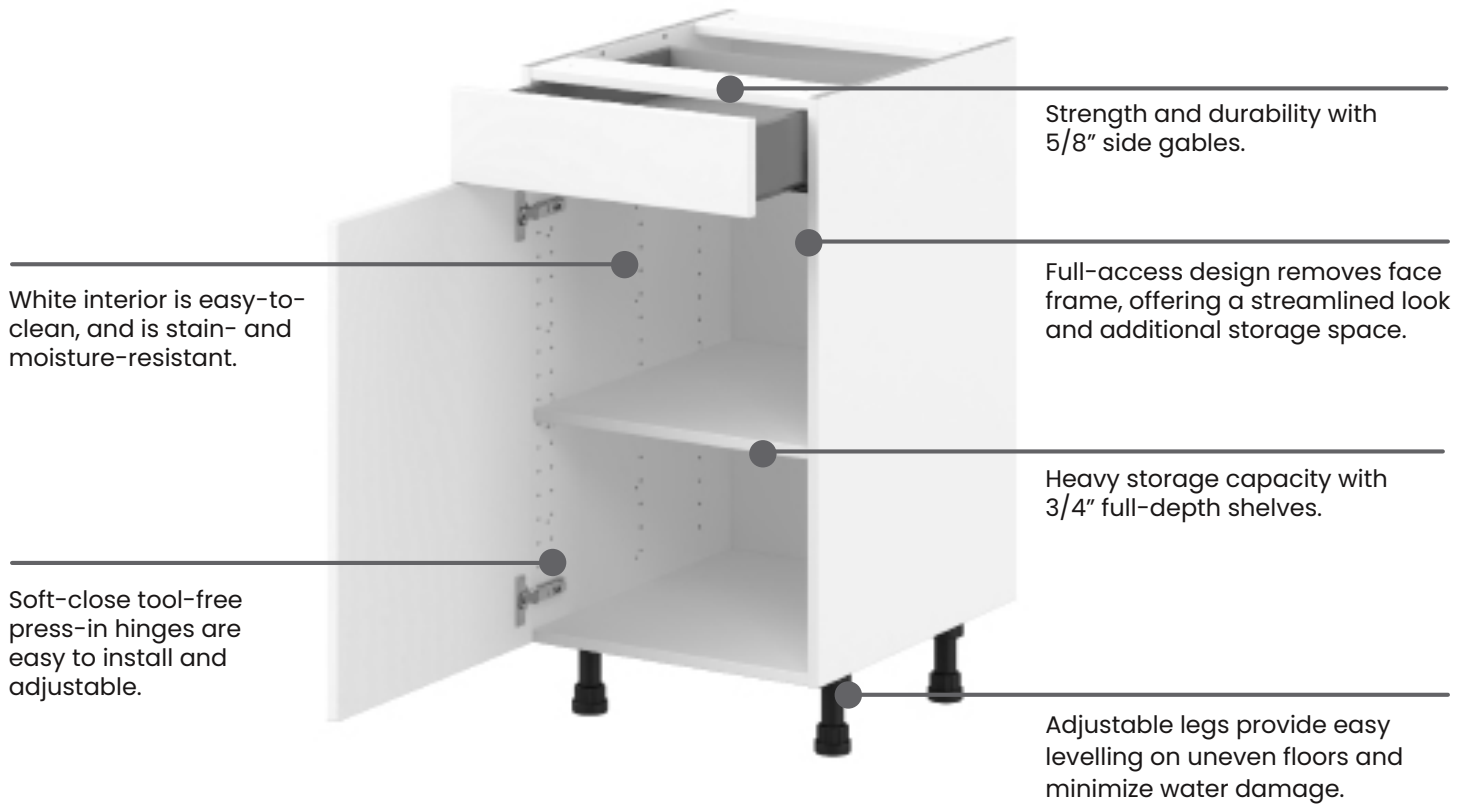


Dovetail drawer box

- 5/8" solid wood dovetail
- Clear-coated drawer box protects against splinters
- 1/4" veneered plywood fully captured bottom
- Full-extension undermount slides
- Soft-close—reduces noise and prolongs the cabinet's lifespan
- 75 lb. weight capacity

CABINET SPECIFICATIONS

VANITY CABINETS

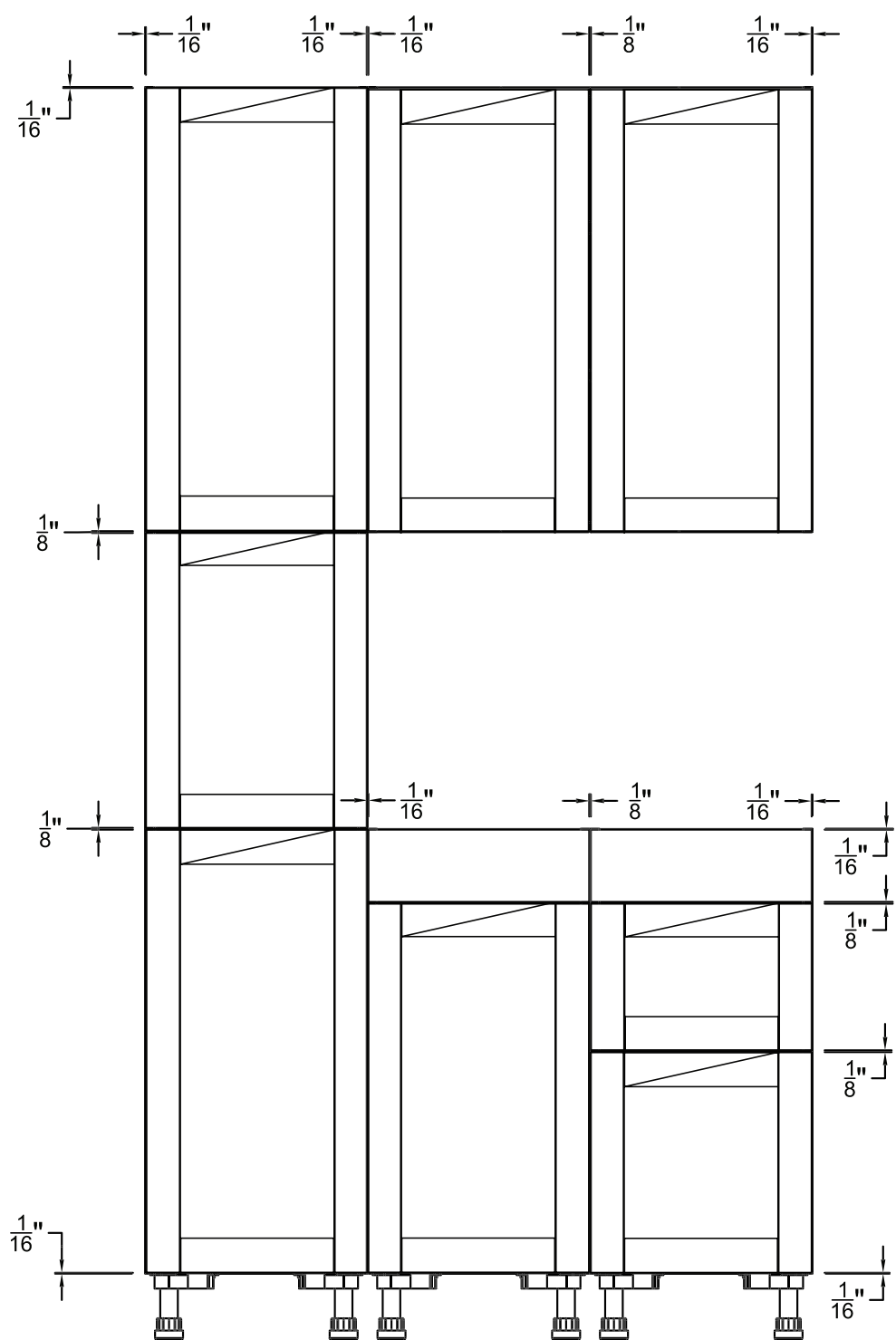


METAL DRAWER BOX



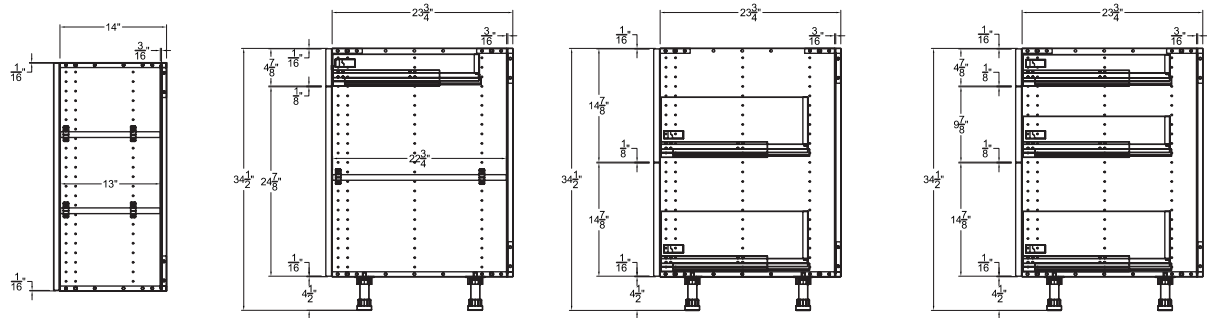
- 5/8" slimline metal drawer box with full-extension soft-close undermount slides allows full visibility to drawer contents
- 75 lb. weight capacity

DOOR & DRAWER REVEAL DIMENSIONS

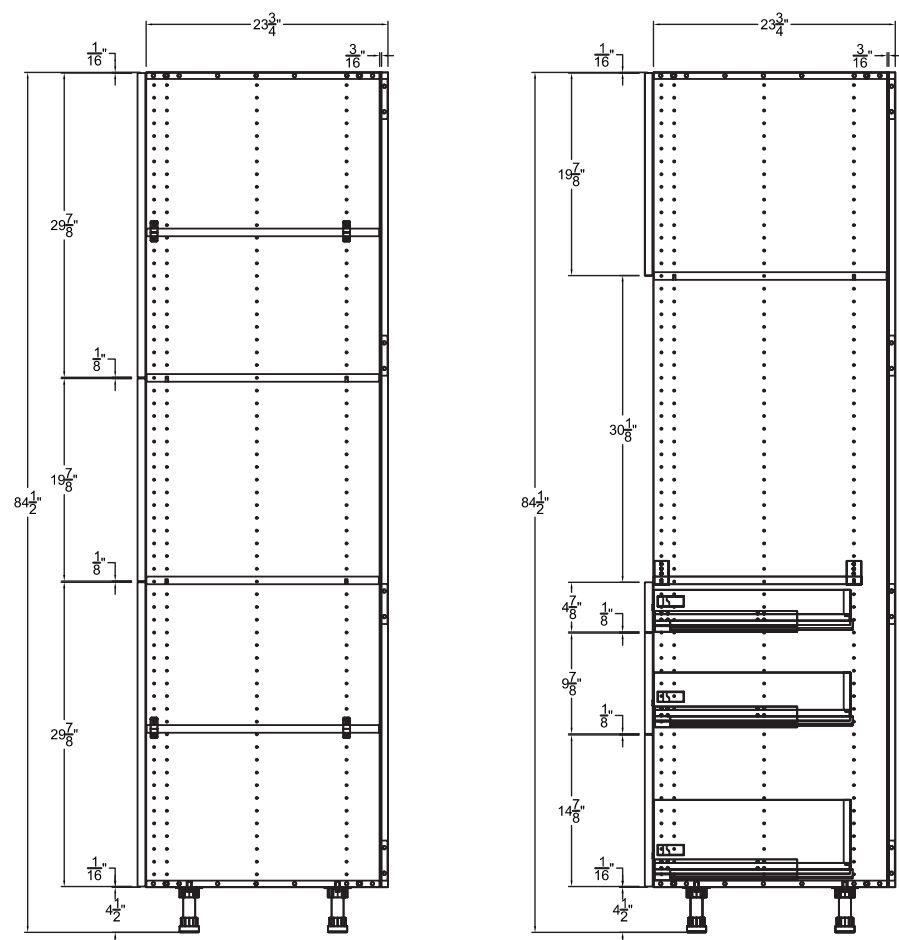


CABINET DIMENSIONS

CABINET HEIGHTS AND DEPTHS



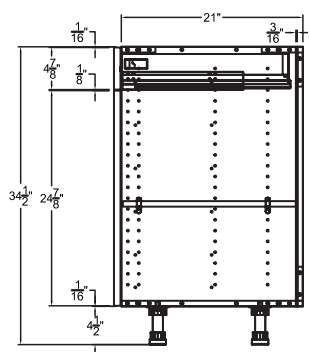
WALL CABINET BASE CABINET TWO-DRAWER BASE CABINET THREE-DRAWER BASE CABINET



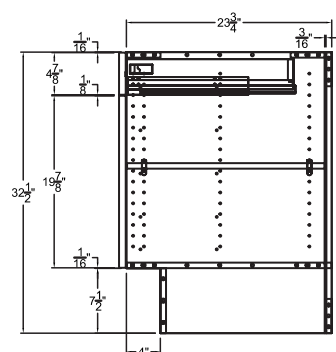
UTILITY CABINET TALL MICROWAVE 3D CABINET

CABINET DIMENSIONS

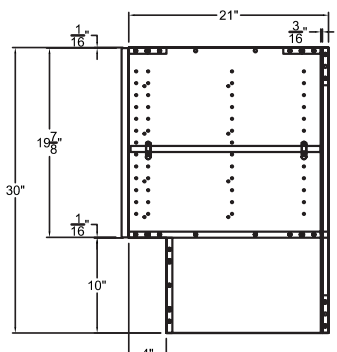
CABINET HEIGHTS AND DEPTHS



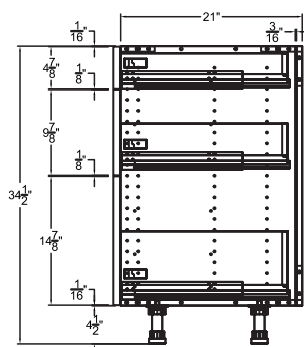
**34 1/2" HIGH
STANDARD VANITY CABINET**



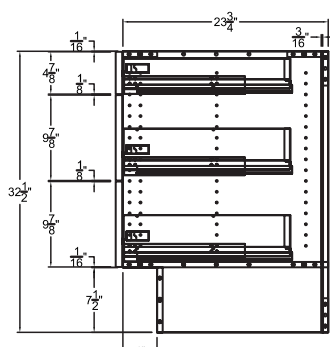
**32 1/2" HIGH
ADA BASE CABINET**



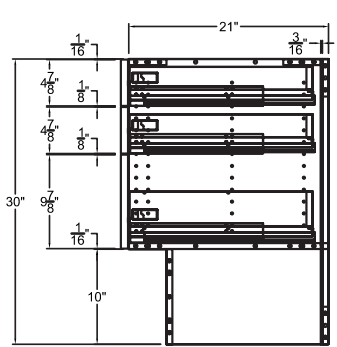
**30" HIGH
ADA VANITY CABINET**



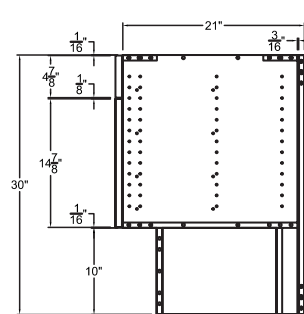
**34 1/2" HIGH
STANDARD VANITY
THREE-DRAWER CABINET**



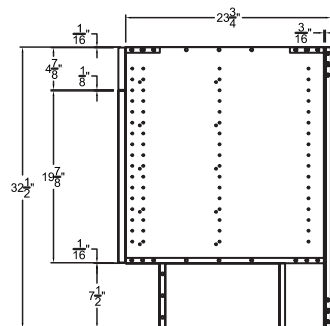
**32 1/2" HIGH
ADA BASE THREE-DRAWER
CABINET**



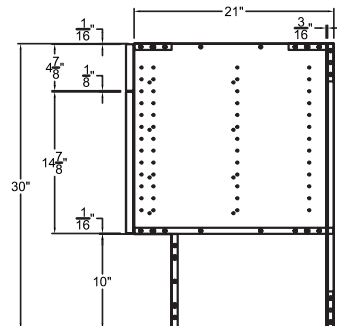
**30" HIGH
ADA VANITY THREE-DRAWER
CABINET**



**30" HIGH
ADA VANITY CABINET**



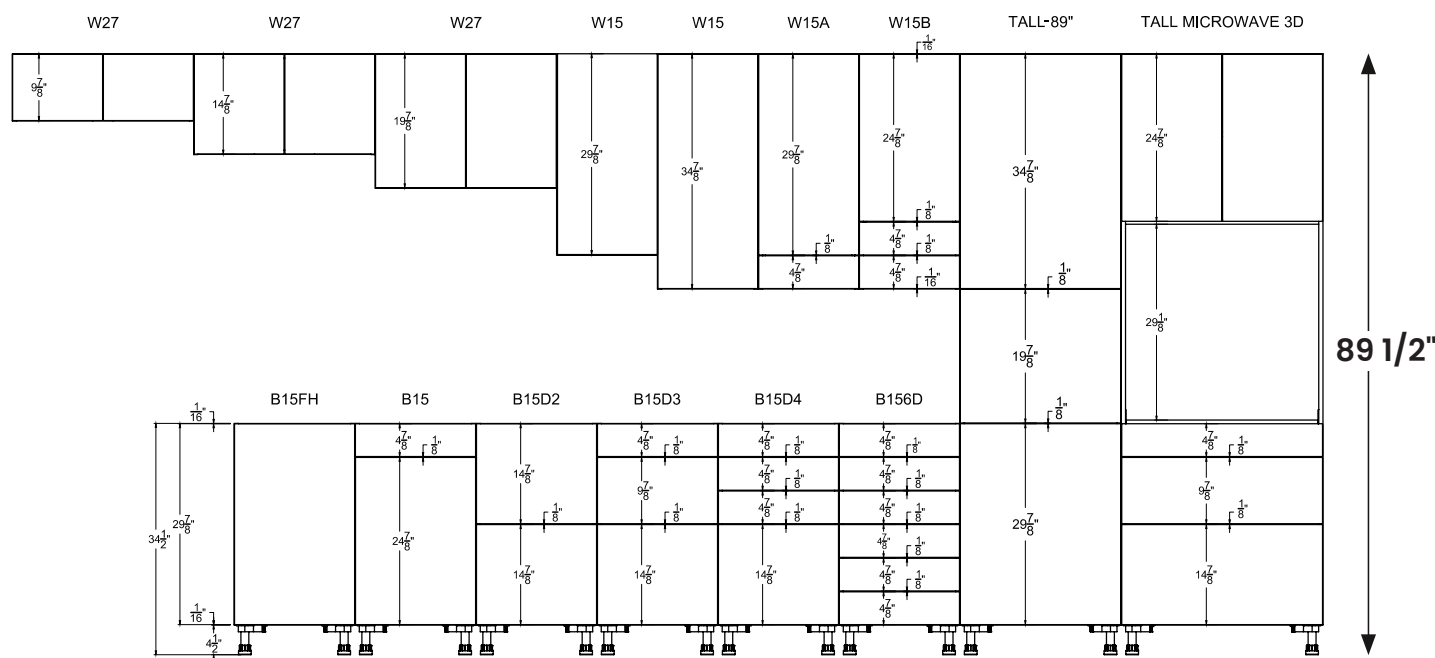
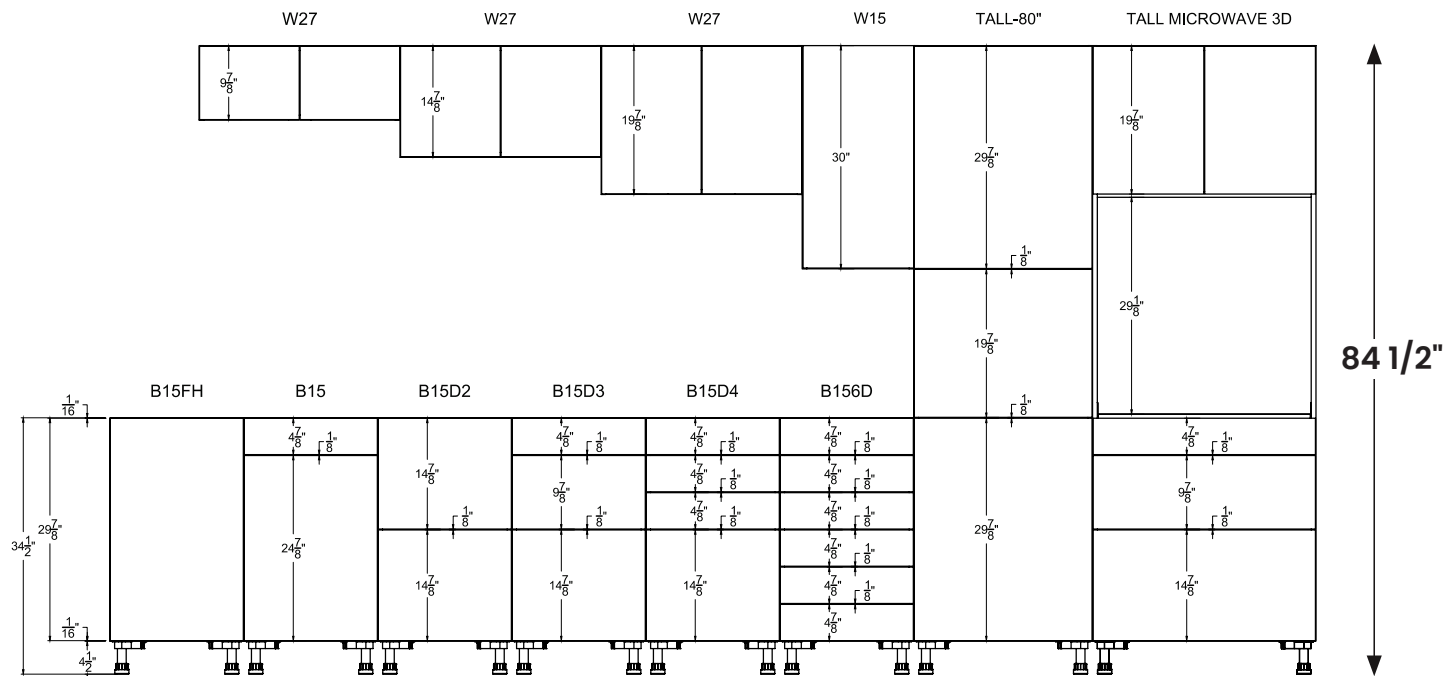
**32 1/2" HIGH
ADA BASE CABINET**



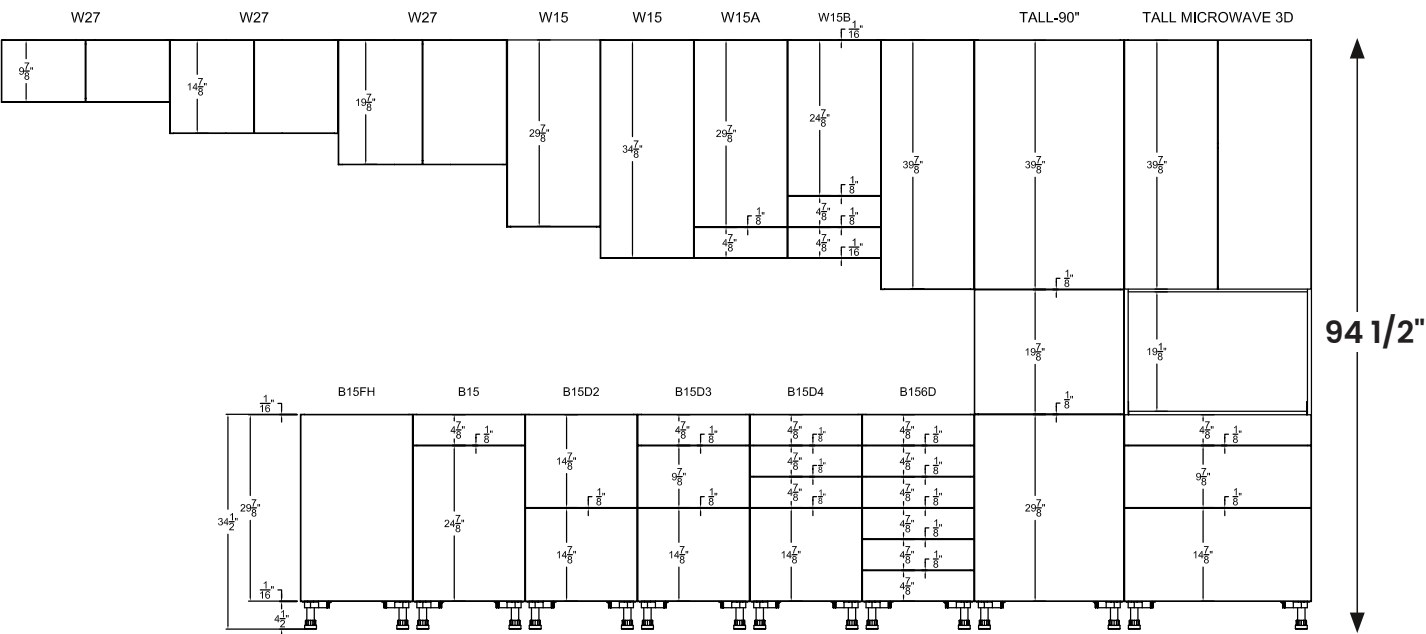
**30" HIGH
ADA VANITY CABINET**

CABINET DIMENSIONS

TALL CABINET HEIGHTS AND DEPTHS



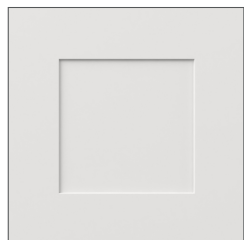
CABINET DIMENSIONS



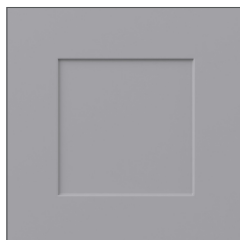
DOOR STYLES & FINISHES



AMBROSE
SANDBAR
(AN)



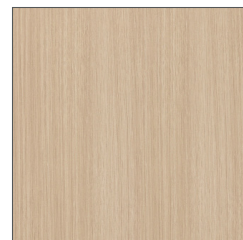
CANDLER
WARM WHITE
(BW)



CANDLER
SLATE GRAY
(BS)



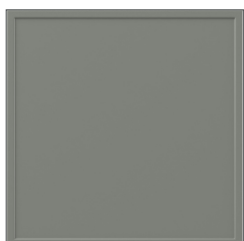
GLENWOOD
BURNT WALNUT
(GB)



GLENWOOD
MOJAVI OAK
(GM)



LENOX
LIGHT GRAY
(LL)



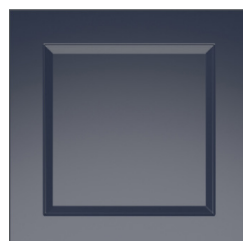
LINDEN
MOSS GREEN
(LM)



LINDEN
WASHED LINEN
(LW)



PEACHTREE
BRIGHT WHITE
(PB)



PEACHTREE
MIDNIGHT BLUE
(PM)



SUMMERHILL
BRIGHT WHITE
(SB)



SUMMERHILL
LIGHT GRAY
(SL)



SUGARHILL
SUGAR COOKIE
(SS)



Glass door options are not available with Glenwood or Linden door styles.



All part numbers will begin with **"DS"** and end with a **two-letter code** representing the finish.

Exceptions:

Tall cabinets do not start with **"DS."**

The following base cabinets do not start with **"DS:"**

- B2414-2FHI3WD
- B2414FHI3WD
- B1814FHI3WD
- B1514FHI3WD
- B24-2FHI3WD
- BCT4D36FFWD
- BCT3D36FFWD
- BCT2D36I1WD

DOOR & DRAWER FRONTS

DOOR FRONTS (WxDxH)		
9" x 3/4" x 30" 11" x 3/4" x 30" 12" x 3/4" x 30" 13 1/8" x 3/4" x 30" 13 1/2" x 3/4" x 30" 15" x 3/4" x 30" 16 1/2" x 3/4" x 30" 18" x 3/4" x 30" 21" x 3/4" x 30" 24" x 3/4" x 30"	15" x 3/4" x 35"	15" x 3/4" x 40"

DRAWER FRONTS (WxDxH)	
15" x 3/4" x 15"	

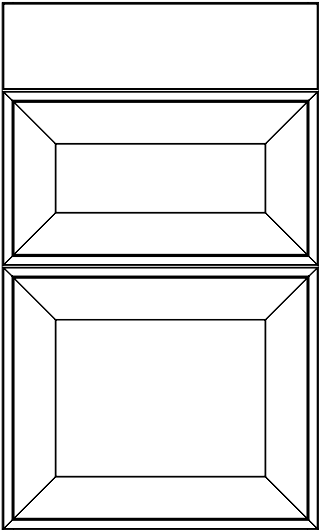


All door styles will require cover panels on the exposed areas of the cabinets, except for Peachtree Bright White and Summerhill Bright White.

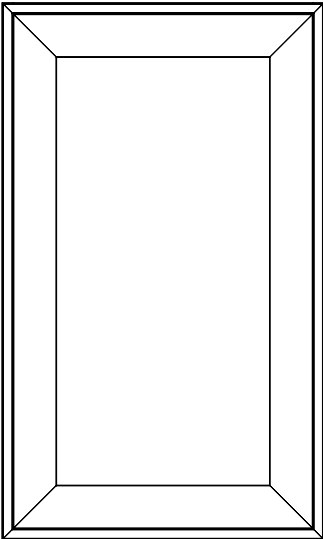
DOOR & DRAWER FRONTS

AMBROSE


3 DRAWER BASE



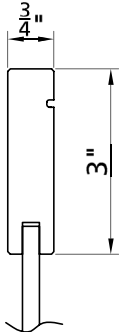
WALL



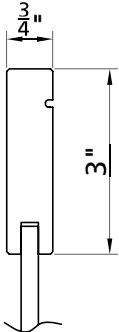
DRAWER FRONT PROFILE



DRAWER FRONT PROFILE



DRAWER FRONT PROFILE

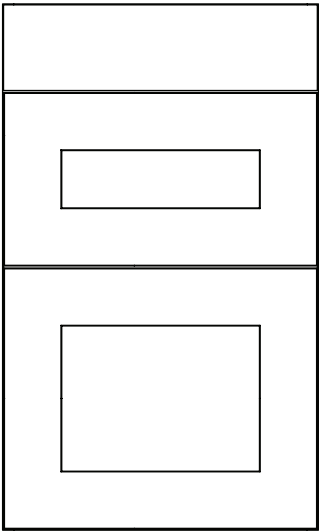


PRICE CATEGORY

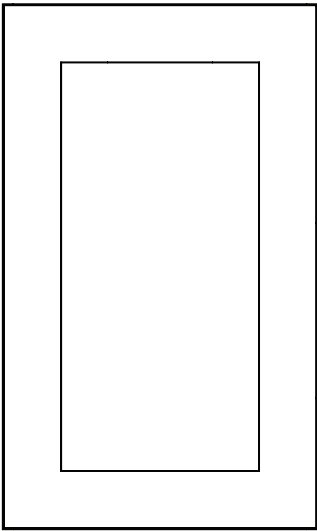
AMBROSE SANDBAR	6
-----------------	---

CANDLER


3 DRAWER BASE



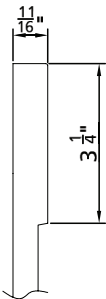
WALL



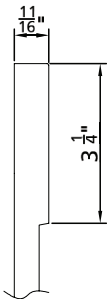
DRAWER FRONT PROFILE



DRAWER FRONT PROFILE



DRAWER FRONT PROFILE



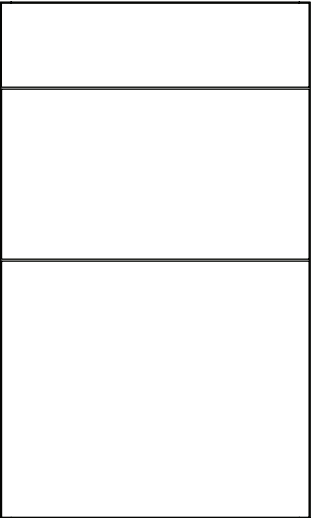
PRICE CATEGORY

CANDLER WARM WHITE	3
CANDLER SLATE GRAY	3

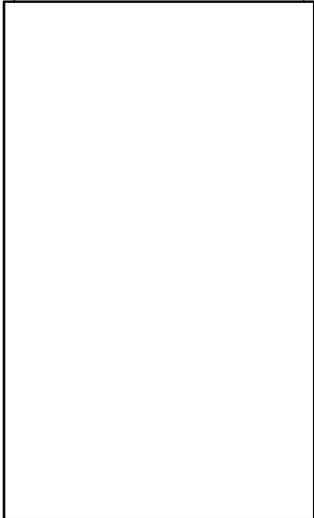
DOOR & DRAWER FRONTS

GLENWOOD

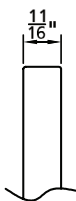
3 DRAWER BASE



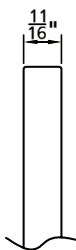
WALL



DRAWER FRONT PROFILE



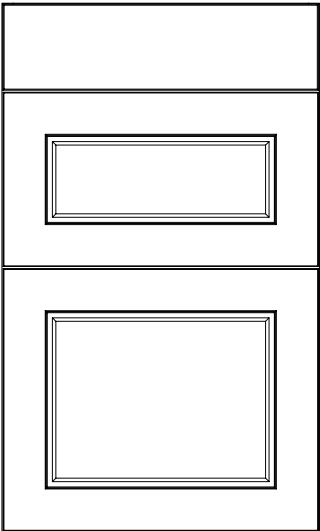
DOOR PROFILE



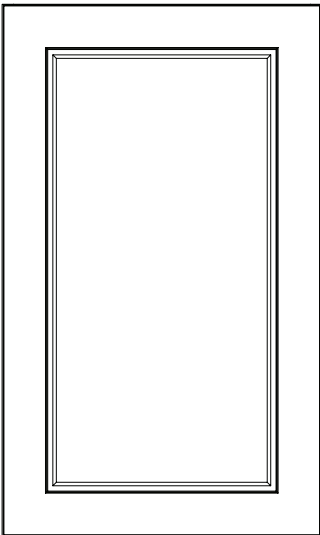
PRICE CATEGORY	
GLENWOOD BURNT WALNUT	1
GLENWOOD MOJAVI OAK	1

LENOX

3 DRAWER BASE



WALL



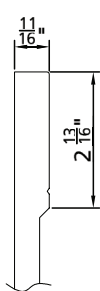
DRAWER FRONT PROFILE



DOOR PROFILE



SIDE



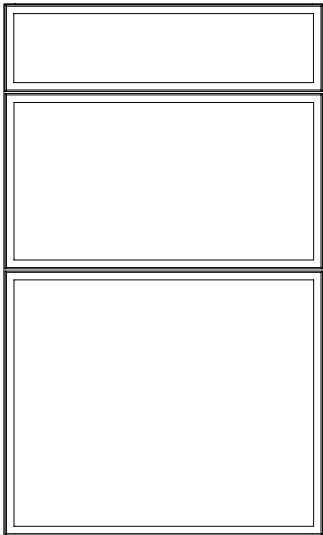
TOP/BOTTOM

PRICE CATEGORY	
LENOX LIGHT GRAY	3

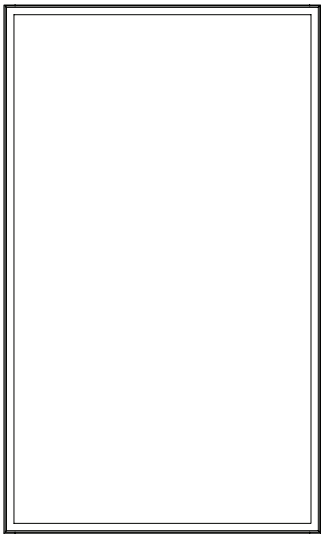
DOOR & DRAWER FRONTS

LINDEN

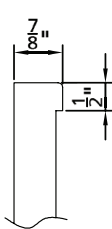
3 DRAWER BASE



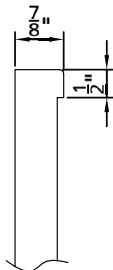
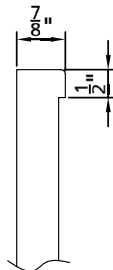
WALL



DRAWER FRONT PROFILE



DOOR PROFILE



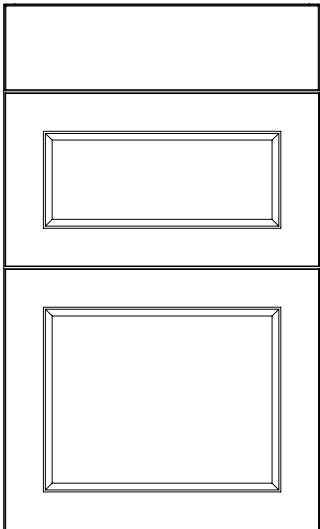
SIDE

TOP/BOTTOM

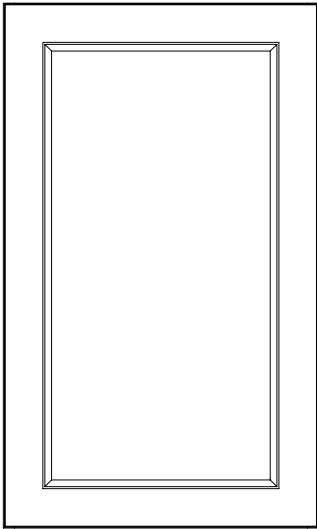
PRICE CATEGORY	
LINDEN MOSS GREEN	4
LINDEN WASHED LINEN	4

PEACHTREE

3 DRAWER BASE



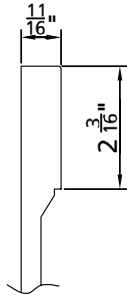
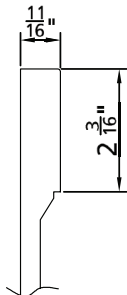
WALL



DRAWER FRONT PROFILE



DOOR PROFILE



SIDE

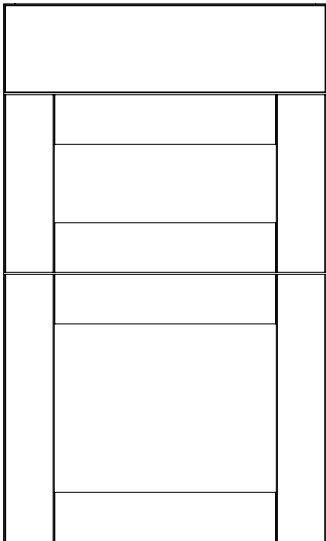
TOP/BOTTOM

PRICE CATEGORY	
PEACHTREE BRIGHT WHITE	3
PEACHTREE MIDNIGHT BLUE	3

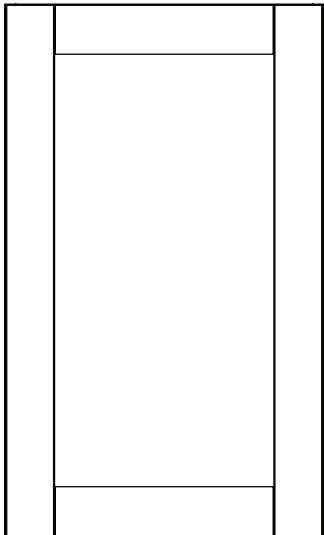
DOOR & DRAWER FRONTS

SUMMERHILL

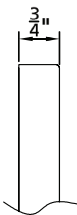
3 DRAWER BASE



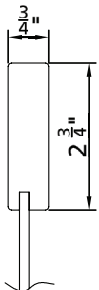
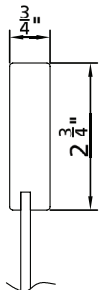
WALL



DRAWER FRONT PROFILE



DOOR PROFILE



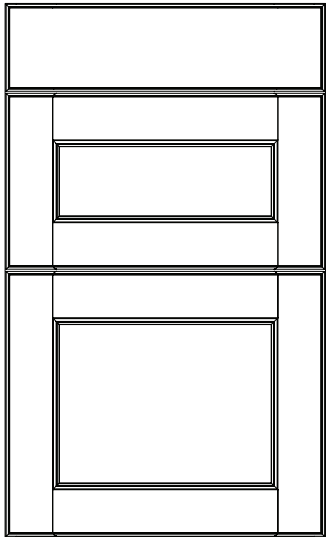
SIDE

TOP/BOTTOM

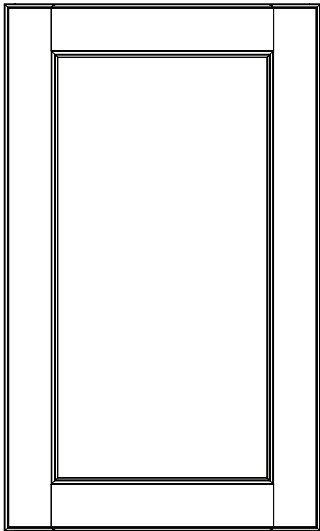
PRICE CATEGORY	
SUMMERHILL BRIGHT WHITE	2
SUMMERHILL LIGHT GRAY	2

SUGARHILL

3 DRAWER BASE



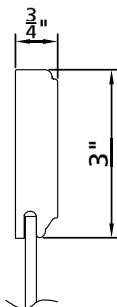
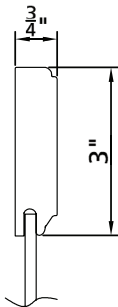
WALL



DRAWER FRONT PROFILE



DOOR PROFILE



SIDE

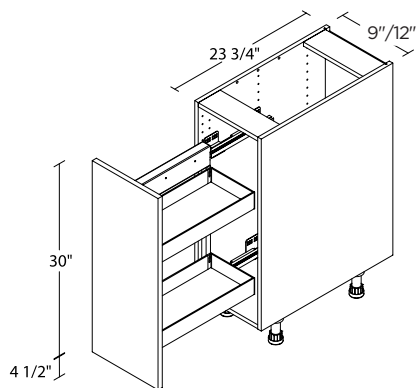
TOP/BOTTOM

PRICE CATEGORY	
SUGARHILL SUGAR COOKIE	5

BASE CABINETS

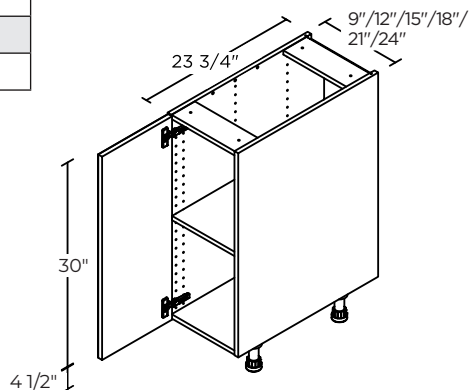
BASE CABINETS ARE 34 1/2" HIGH.

1 DOOR / PULL-OUT SPICE RACK



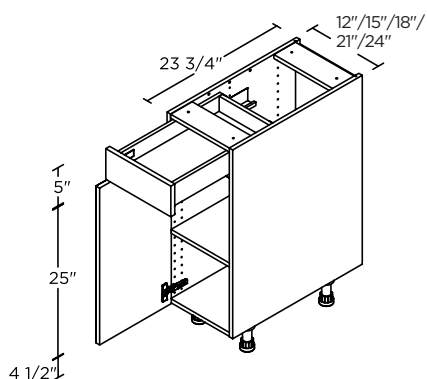
9"	B9FHPOL
9"	B9FHPOR
12"	B12FHPOL
12"	B12FHPOR

1 DOOR



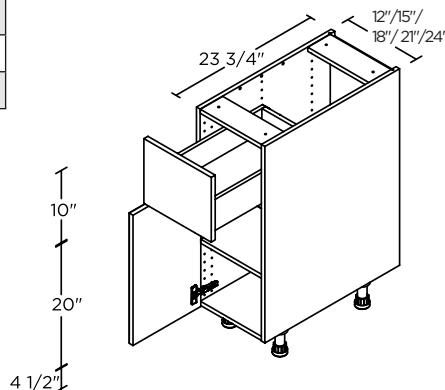
9"	B9FH(L/R)
12"	B12FH(L/R)
15"	B15FH(L/R)
18"	B18FH(L/R)
21"	B21FH(L/R)
24"	B24FH(L/R)

1 DOOR / 1 DRAWER



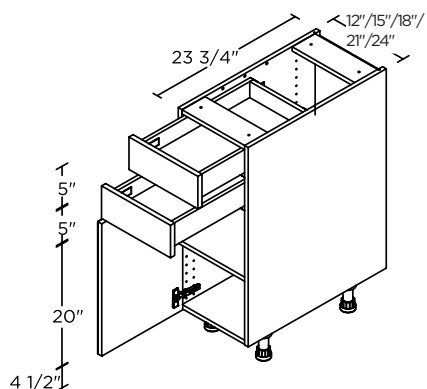
12"	B12(L/R)WD
15"	B15(L/R)WD
18"	B18(L/R)WD
21"	B21(L/R)WD
24"	B24(L/R)WD

1 DOOR / 1 DRAWER



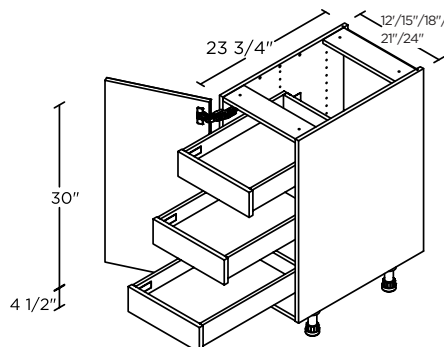
12"	B12A(L/R)WD
15"	B15A(L/R)WD
18"	B18A(L/R)WD
21"	B21A(L/R)WD
24"	B24A(L/R)WD

1 DOOR / 2 DRAWERS



12"	B12B(L/R)WD
15"	B15B(L/R)WD
18"	B18B(L/R)WD
21"	B21B(L/R)WD
24"	B24B(L/R)WD

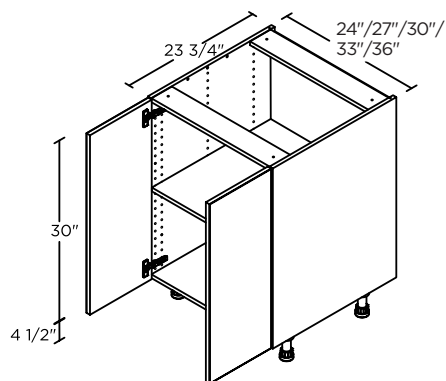
1 DOOR / 3 INNER DRAWERS



12"	B12FHI3(L/R)WD
15"	B15FHI3(L/R)WD
18"	B18FHI3(L/R)WD
21"	B21FHI3(L/R)WD
24"	B24FHI3(L/R)WD

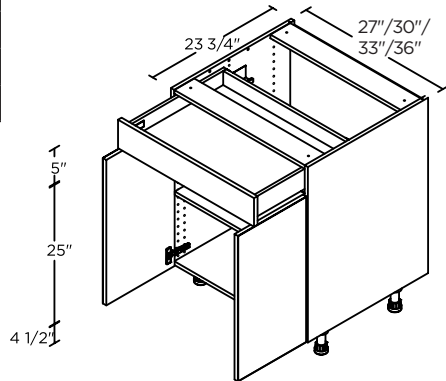
BASE CABINETS

2 DOORS



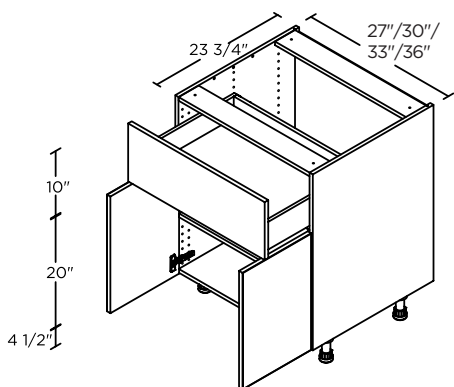
24"	B24-2FH
27"	B27FH
30"	B30FH
33"	B33FH
36"	B36FH

2 DOORS / 1 DRAWER



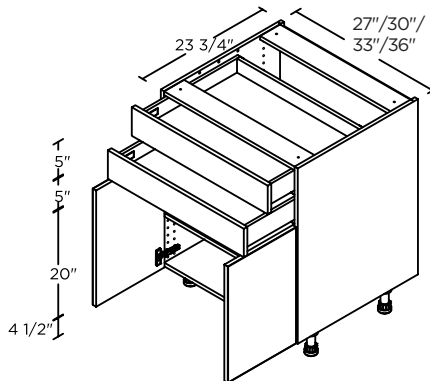
27"	B27WD
30"	B30WD
33"	B33WD
36"	B36WD

2 DOORS / 1 DRAWER



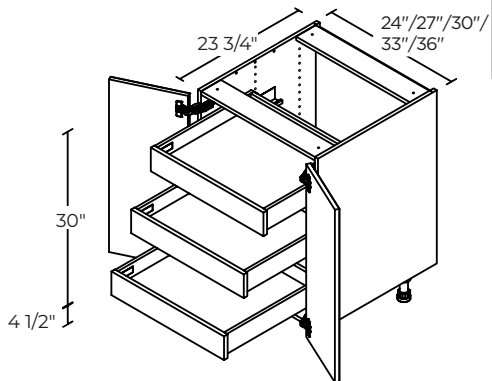
27"	B27AWD
30"	B30AWD
33"	B33AWD
36"	B36AWD

2 DOORS / 2 DRAWERS



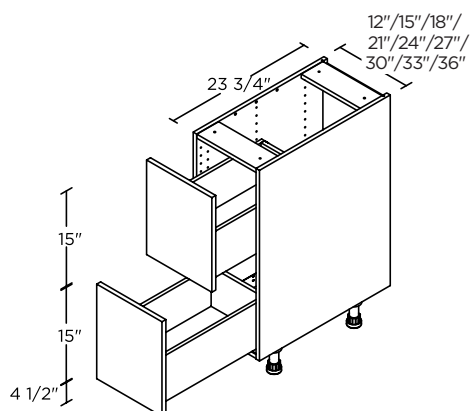
27"	B27BWD
30"	B30BWD
33"	B33BWD
36"	B36BWD

2 DOORS / 3 INNER DRAWERS



24"	B24-2FHI3WD
27"	B27FHI3WD
30"	B30FHI3WD
33"	B33FHI3WD
36"	B36FHI3WD

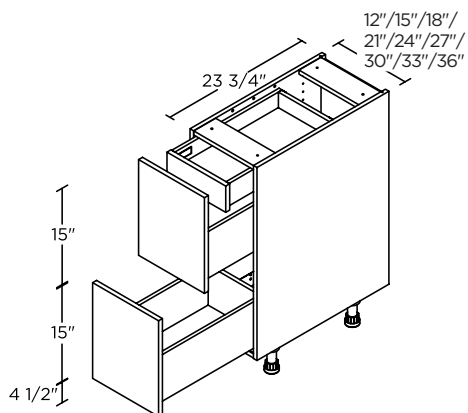
2 DRAWERS



12"	B2D12WD
15"	B2D15WD
18"	B2D18WD
21"	B2D21WD
24"	B2D24WD
27"	B2D27WD
30"	B2D30WD
33"	B2D33WD
36"	B2D36WD

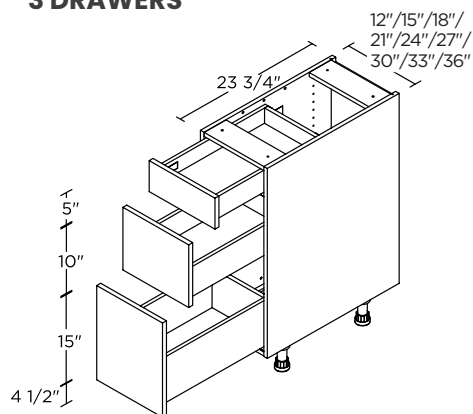
BASE CABINETS

2 DRAWERS / 1 INNER DRAWER



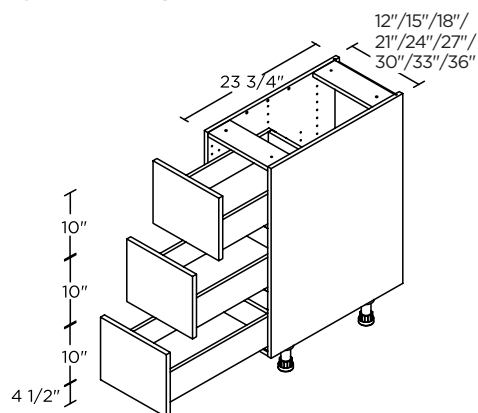
12"	B2D12I1WD
15"	B2D15I1WD
18"	B2D18I1WD
21"	B2D21I1WD
24"	B2D24I1WD
27"	B2D27I1WD
30"	B2D30I1WD
33"	B2D33I1WD
36"	B2D36I1WD

3 DRAWERS



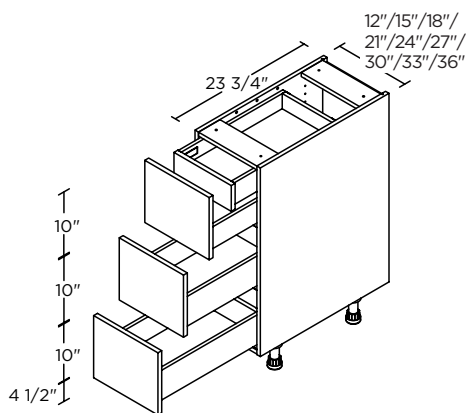
12"	B3D12WD
15"	B3D15WD
18"	B3D18WD
21"	B3D21WD
24"	B3D24WD
27"	B3D27WD
30"	B3D30WD
33"	B3D33WD
36"	B3D36WD

3 DRAWERS



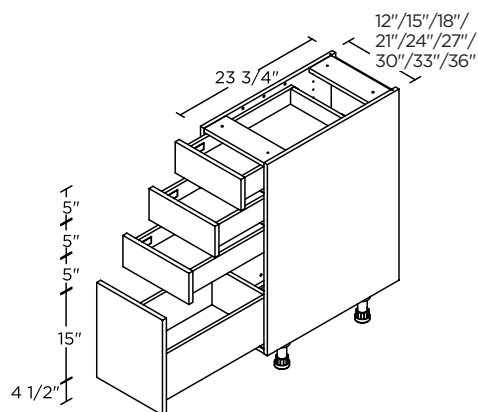
12"	B3DA12WD
15"	B3DA15WD
18"	B3DA18WD
21"	B3DA21WD
24"	B3DA24WD
27"	B3DA27WD
30"	B3DA30WD
33"	B3DA33WD
36"	B3DA36WD

3 DRAWERS / 1 INNER DRAWER



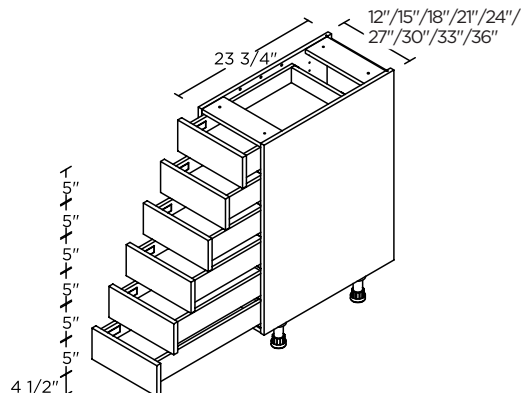
12"	B3DA12I1WD
15"	B3DA15I1WD
18"	B3DA18I1WD
21"	B3DA21I1WD
24"	B3DA24I1WD
27"	B3DA27I1WD
30"	B3DA30I1WD
33"	B3DA33I1WD
36"	B3DA36I1WD

4 DRAWERS



12"	B4D12WD
15"	B4D15WD
18"	B4D18WD
21"	B4D21WD
24"	B4D24WD
27"	B4D27WD
30"	B4D30WD
33"	B4D33WD
36"	B4D36WD

6 DRAWERS



12"	B6D12WD
15"	B6D15WD
18"	B6D18WD
21"	B6D21WD
24"	B6D24WD
27"	B6D27WD
30"	B6D30WD
33"	B6D33WD
36"	B6D36WD

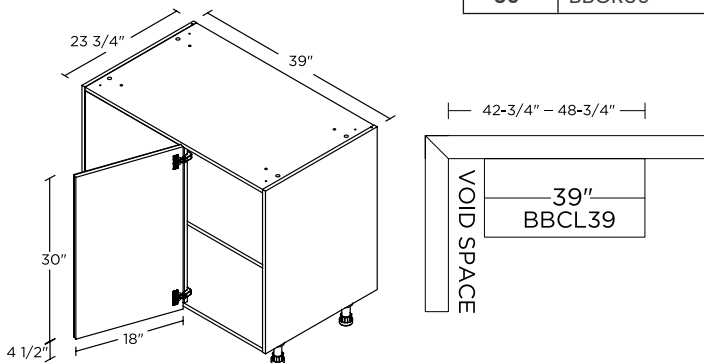
BASE CABINETS

CORNER BASE CABINETS

BASE CABINETS ARE 34 1/2" HIGH.

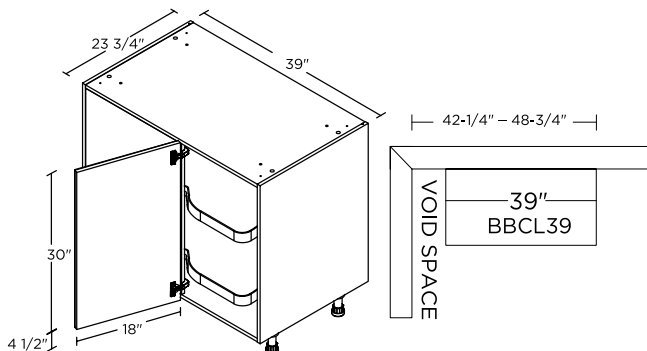
BLIND CORNER WITH SHELF

39"	BBCL39
39"	BBCR39



BLIND CORNER WITH LEMANS PULL-OUT

39"	BBCL39LC
39"	BBCR39LC



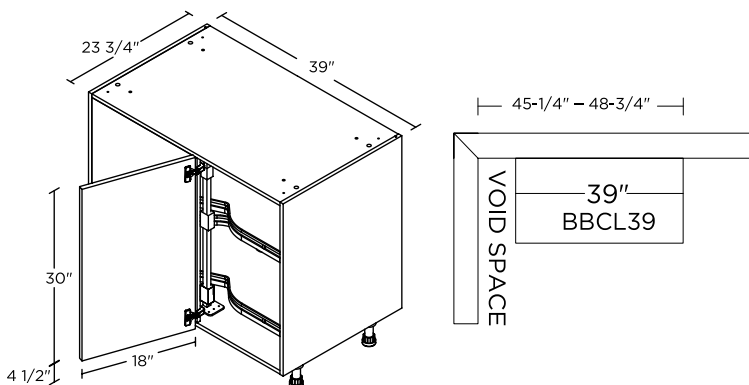
Min. 42 3/4" doesn't allow for filler / hardware clearance.

Max. 48 3/4" is with a 6" filler attached to be flush with door - The panel on the blind side features a linen pattern. Fillers are required for both the blind side and the adjacent side, and must be ordered separately.



BLIND CORNER WITH PREMIUM LEMANS PULL-OUT

39"	BBCL39LCP
39"	BBCR39LCP

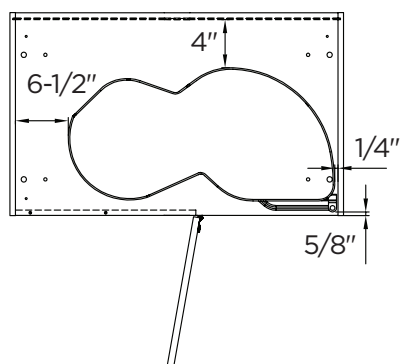


Min. 42 3/4" doesn't allow for filler / hardware clearance.

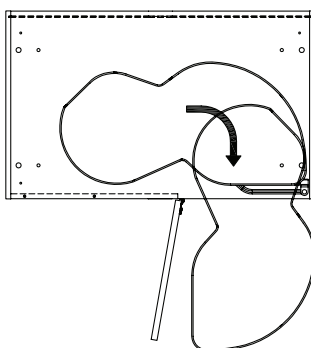
Max. 48 3/4" is with a 6" filler attached to be flush with door - The panel on the blind side features a linen pattern. Fillers are required for both the blind side and the adjacent side, and must be ordered separately.

For Premium Lemans Pull-Out: left-opening shown below.

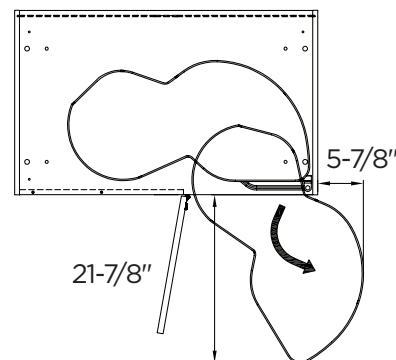
STEP 1: cabinet door opens.



STEP 2: top or bottom tray swings out.



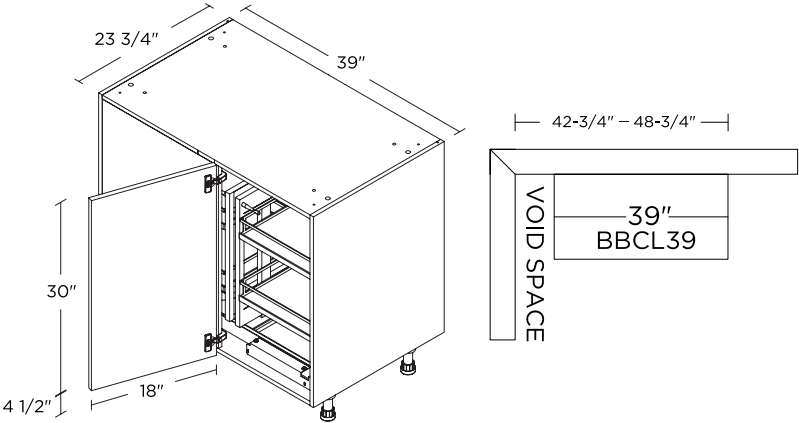
STEP 3: then swings completely out of the cabinet.



BASE CABINETS

BLIND CORNER WITH MAGIC CORNER PULL-OUT

39"	BBCL39MC
39"	BBCR39MC

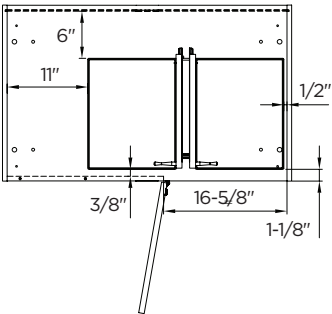


Min. 42 3/4" doesn't allow for filler / hardware clearance.

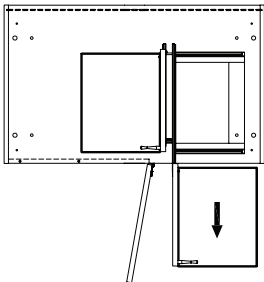
Max. 48 3/4" is with a 6" filler attached to be flush with door - The panel on the blind side features a linen pattern. Fillers are required for both the blind side and the adjacent side, and must be ordered separately.

For Magic Corner Pull-Out: left-opening shown below.

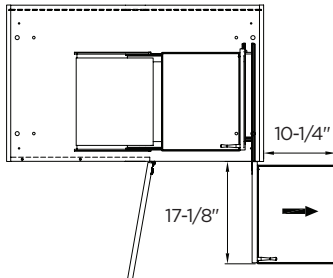
STEP 1



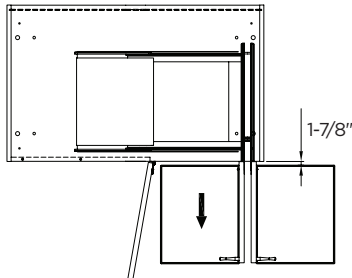
STEP 2



STEP 3



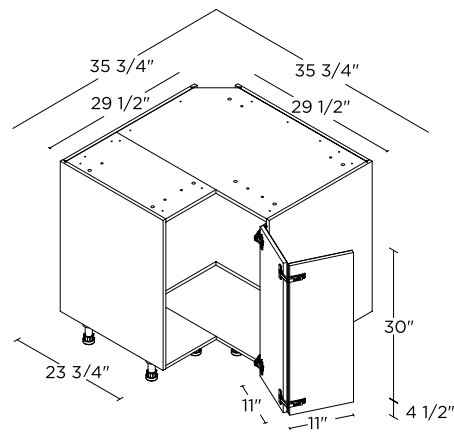
STEP 4



BASE CABINETS

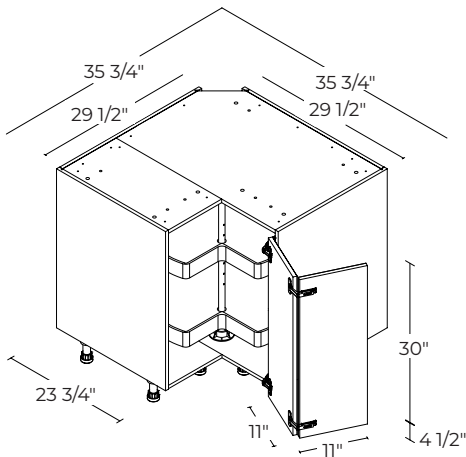
CORNER WITH SHELF

36"	BC36(L/R)
-----	-----------



CORNER WITH LAZY SUSAN

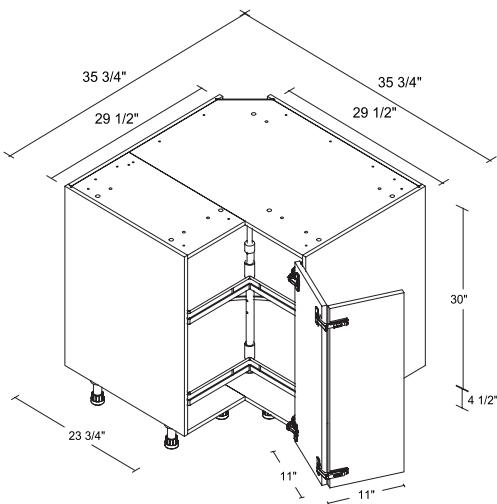
36"	BC36LS(L/R)
-----	-------------



Lazy Susan and Premium Lazy Susan rod height adjustments:
Minimum: 23 5/8"
Maximum: 28 3/4"

CORNER WITH PREMIUM LAZY SUSAN

36"	BC36LSP(L/R)
-----	--------------

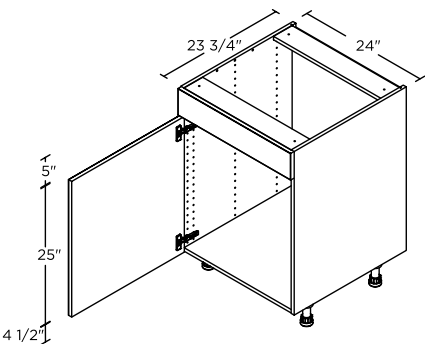
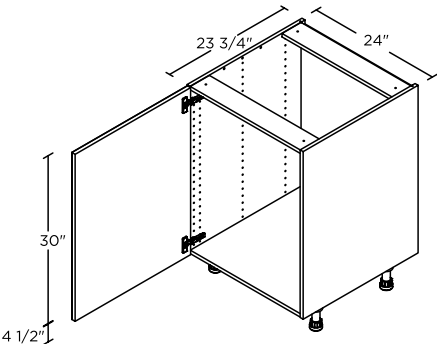


Lazy Susan and Premium Lazy Susan rod height adjustments:
Minimum: 23 5/8"
Maximum: 28 3/4"

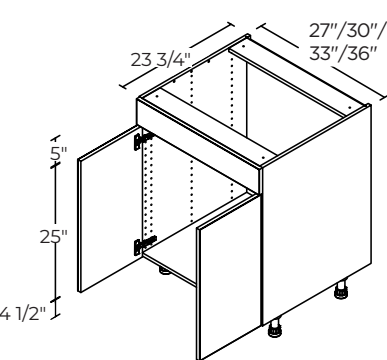
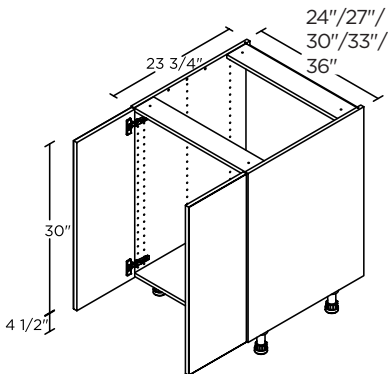
BASE CABINETS

SINK BASE CABINETS

1 DOOR	24"	SB24FH(L/R)	1 DOOR / 1 FIXED FRONT	24"	SB24FF(L/R)

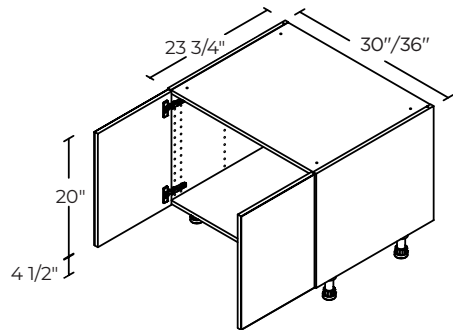


2 DOORS	24"	SB24-2FH	2 DOORS / 1 FIXED FRONT	27"	SB27FF
	27"	SB27FH		30"	SB30FF
	30"	SB30FH		33"	SB33FF
	33"	SB33FH		36"	SB36FF
	36"	SB36FH			



FARM SINK BASE CABINETS

2 DOORS	30"	SBAS30
	36"	SBAS36



A separate drawer front must be ordered to complete.

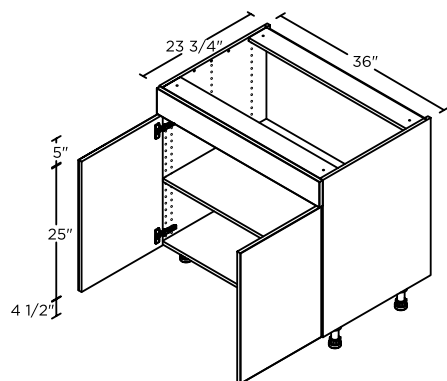
BASE CABINETS

COOKTOP CABINETS

2 DOORS / 1 FIXED FRONT

36"

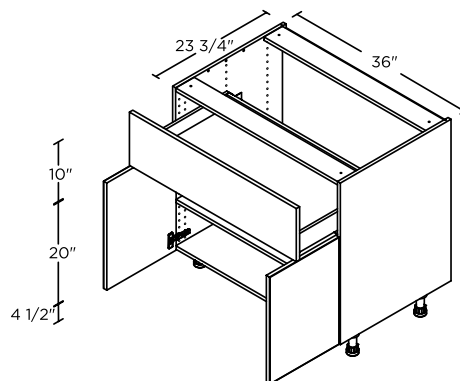
BCT36FF



2 DOORS / 1 DRAWER

36"

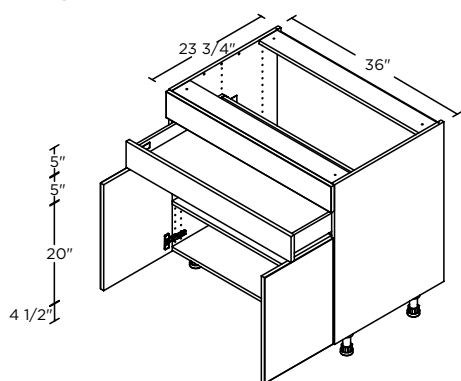
BCT36AWD



2 DOORS / 1 DRAWER / 1 FIXED FRONT

36"

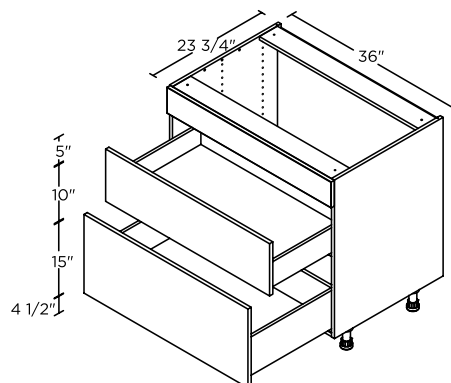
BCT36BFFWD



2 DRAWERS / 1 FIXED FRONT

36"

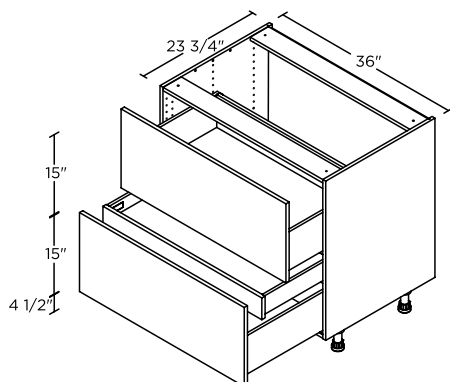
BCT3D36FFWD



2 DRAWERS / 1 INNER DRAWER

36"

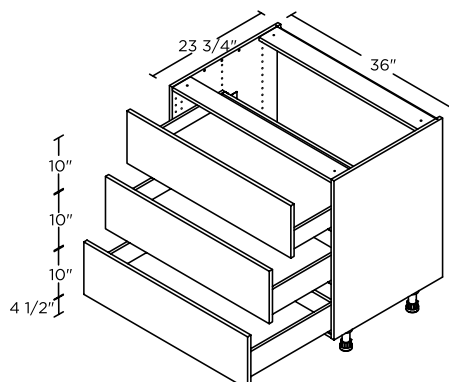
BCT2D36IWD



3 DRAWERS

36"

BCT3D36AWD

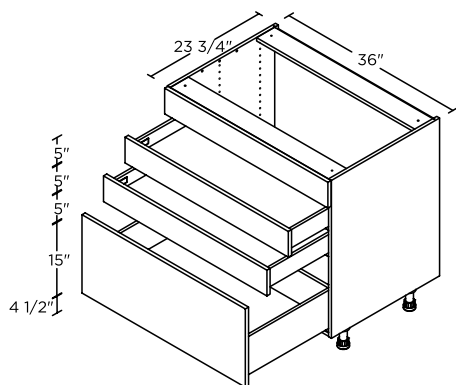


BASE CABINETS

3 DRAWERS / 1 FIXED FRONT

36"

BCT4D36FFWD

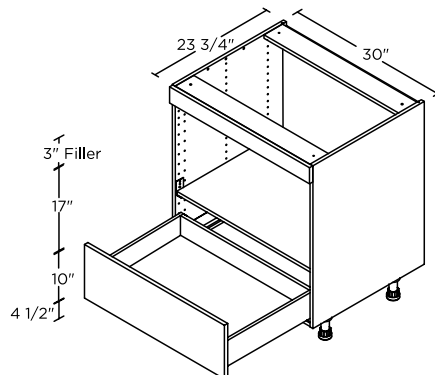


MICROWAVE CABINET

1 DRAWER

30"

BMW30WD



Cut-out size: 28 1/2" wide x 17" high. Filler can be cut to adjust height opening 17" to 20".

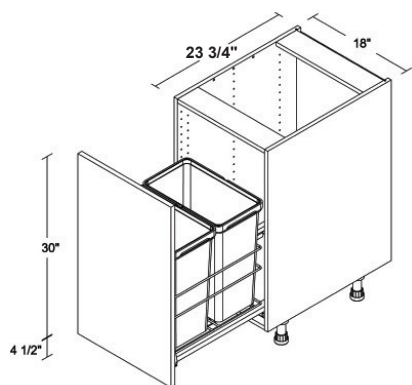
WASTE/RECYCLING CABINETS

FULL HEIGHT DOOR

18"

B18FHSWB

Comes with 2 bins

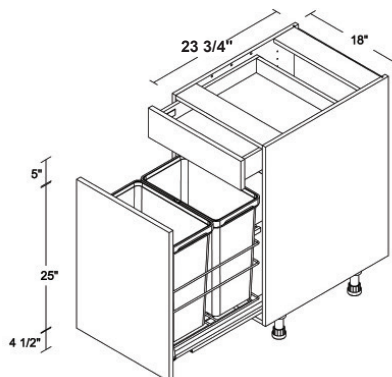


PULL-OUT / 1 DRAWER

18"

B18SWBWD

Comes with 2 bins

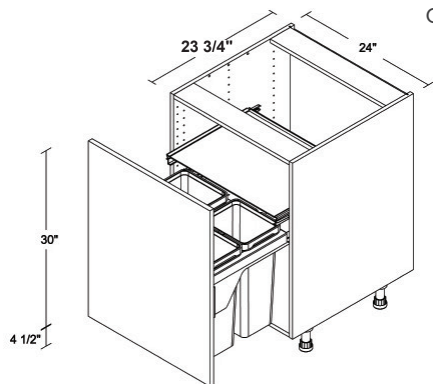


FULL HEIGHT DOOR

24"

B24FHSWB

Comes with 3 bins

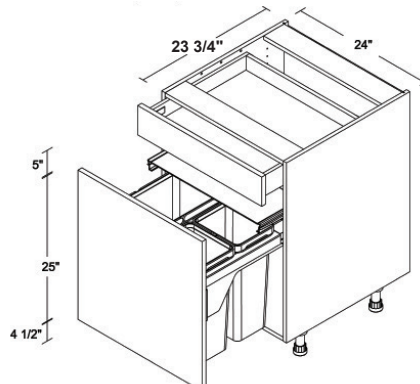


PULL-OUT / 1 DRAWER

24"

B24SWBWD

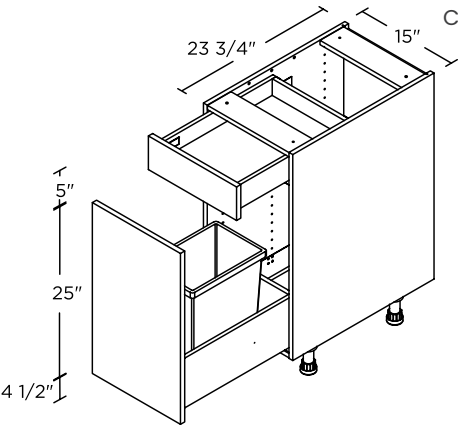
Comes with 3 bins



BASE CABINETS

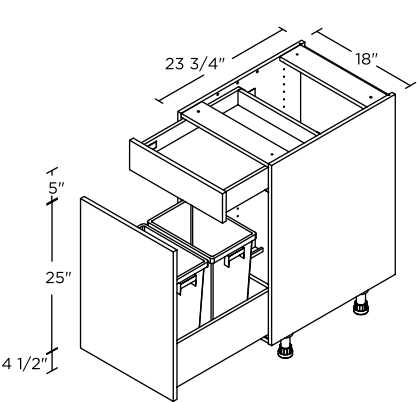
PULL-OUT / 1 DRAWER	15"	BPO15WD

Comes with 1 bin



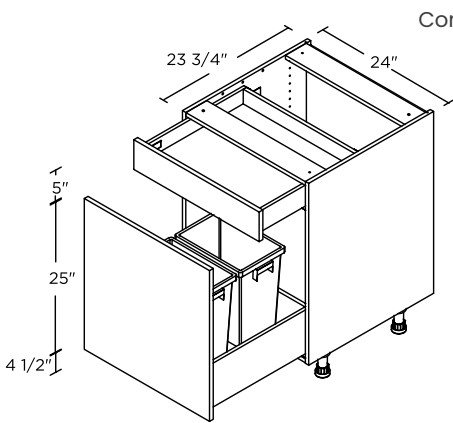
PULL-OUT / 1 DRAWER	18"	BPO18WD

Comes with 2 bins



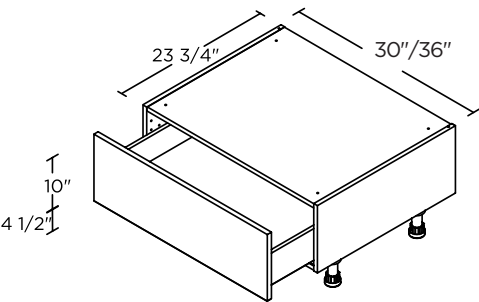
PULL-OUT / 1 DRAWER	24"	BPO24WD

Comes with 2 bins

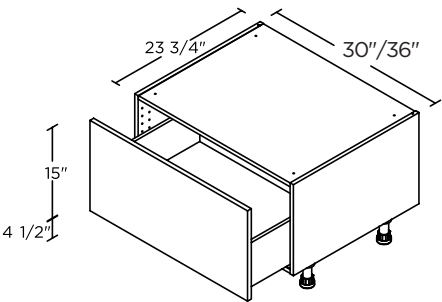


BASE WINDOW SEAT / BANQUETTE CABINETS

1 DRAWER	30"	BWS3010WD
	36"	BWS3610WD



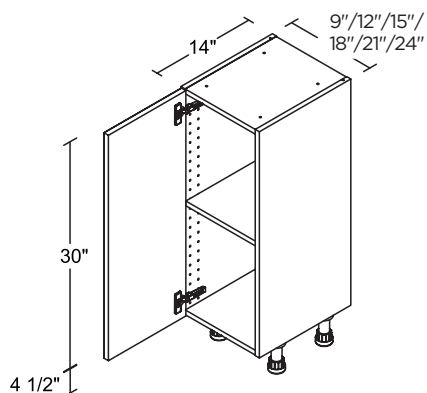
1 DRAWER	30"	BWS3015WD
	36"	BWS3615WD



BASE CABINETS

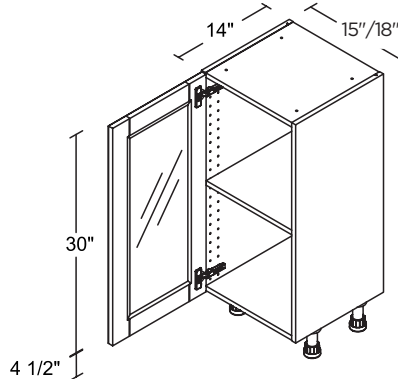
SHALLOW BASE CABINETS

1 DOOR



9"	B914FH(L/R)
12"	B1214FH(L/R)
15"	B1514FH(L/R)
18"	B1814FH(L/R)
21"	B2114FH(L/R)
24"	B2414FH(L/R)

1 GLASS DOOR*

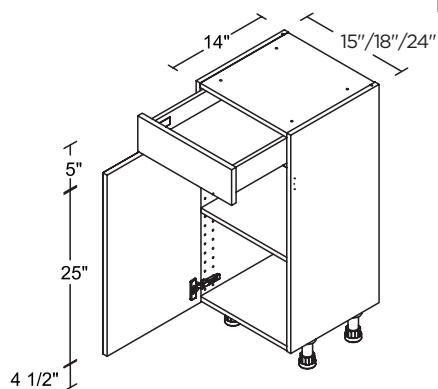


15"	BG1514FH(L/R)
18"	BG1814FH(L/R)

*Glass shelves can be purchased separately.

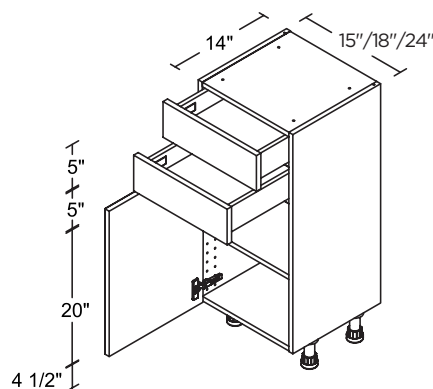
See page J-2 for glass shelf information.

1 DOOR / 1 DRAWER



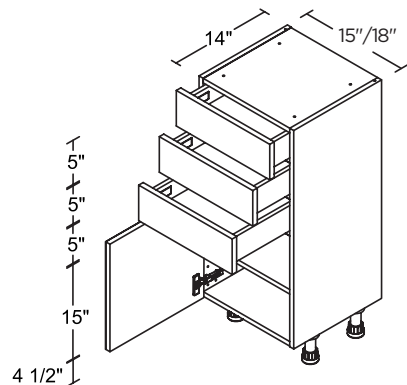
15"	B1514(L/R)WD
18"	B1814(L/R)WD
24"	B2414(L/R)WD

1 DOOR / 2 DRAWERS



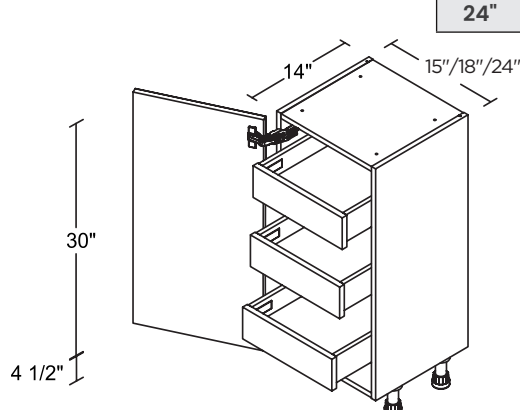
15"	B1514B(L/R)WD
18"	B1814B(L/R)WD
24"	B2414B(L/R)WD

1 DOOR / 3 DRAWERS



15"	B1514C(L/R)WD
18"	B1814C(L/R)WD

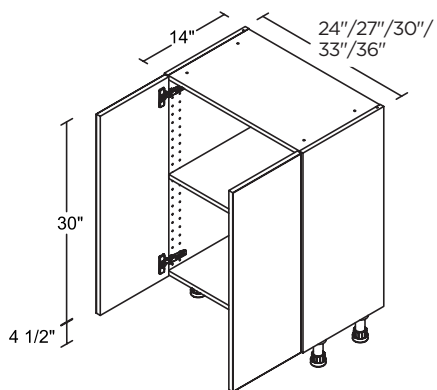
1 DOOR / 3 INNER DRAWERS



15"	B1514FHI3(L/R)WD
18"	B1814FHI3(L/R)WD
24"	B2414FHI3(L/R)WD

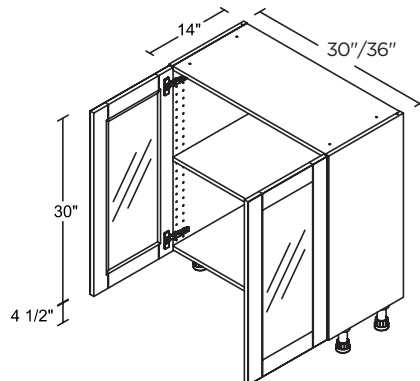
BASE CABINETS

2 DOORS



24"	B2414-2FH
27"	B2714FH
30"	B3014FH
33"	B3314FH
36"	B3614FH

2 GLASS DOORS*

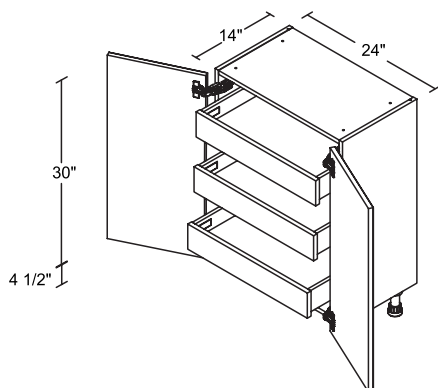


30"	BG3014FH
36"	BG3614FH

*Glass shelves can be purchased separately.

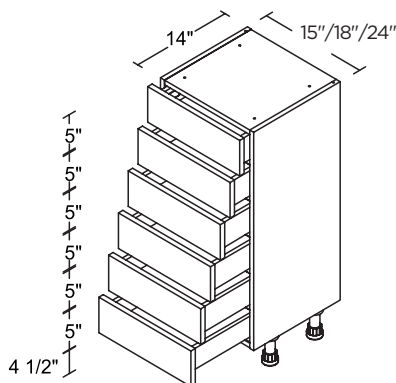
See page J-2 for glass shelf information.

2 DOORS / 3 INNER DRAWERS



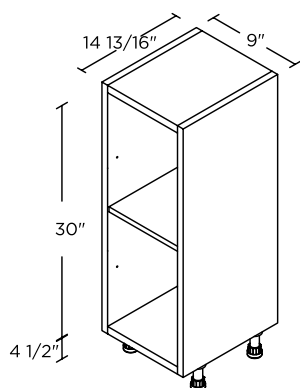
24"	B2414-2FHI3WD
-----	---------------

6 DRAWERS



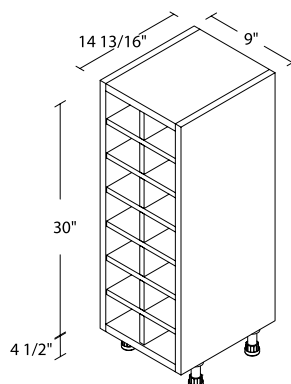
15"	B6D1514WD
18"	B6D1814WD
24"	B6D2414WD

BASE OPEN SHELF



9"	BOS930
----	--------

BASE WINE RACK

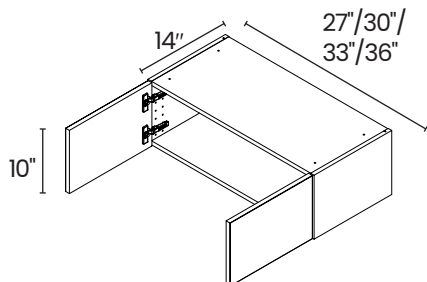


9"	BWC930
----	--------

WALL CABINETS

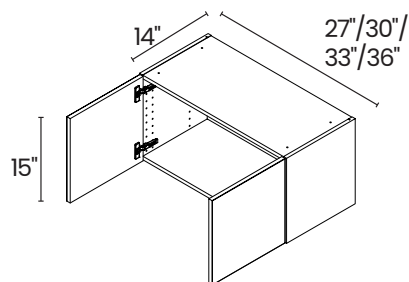
10" HIGH / 2 DOORS

27"	W2710
30"	W3010
33"	W3310
36"	W3610



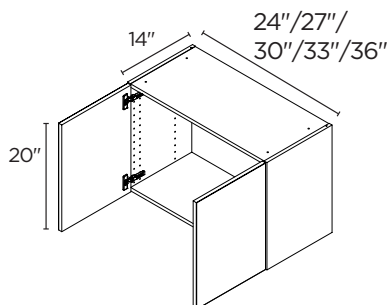
15" HIGH / 2 DOORS

27"	W2715
30"	W3015
33"	W3315
36"	W3615



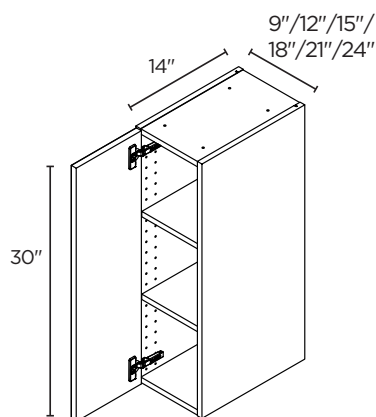
20" HIGH / 2 DOORS

24"	W2420-2
27"	W2720
30"	W3020
33"	W3320
36"	W3620



30" HIGH / 1 DOOR

9"	W930(L/R)
12"	W1230(L/R)
15"	W1530(L/R)
18"	W1830(L/R)
21"	W2130(L/R)
24"	W2430(L/R)

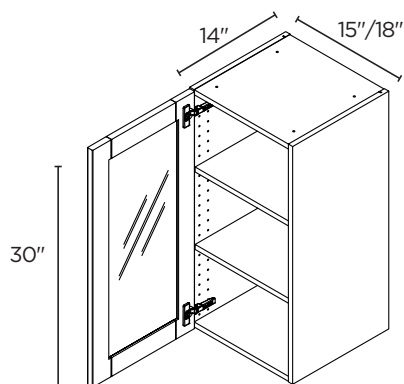


30" HIGH / 1 GLASS DOOR*

15"	WG1530(L/R)
18"	WG1830(L/R)

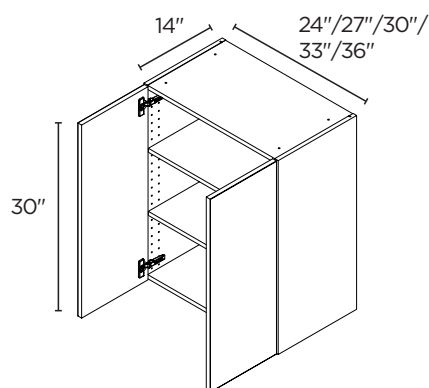
*Glass shelves can be purchased separately.

See page J-2 for glass shelf information.



30" HIGH / 2 DOORS

24"	W2430-2
27"	W2730
30"	W3030
33"	W3330
36"	W3630



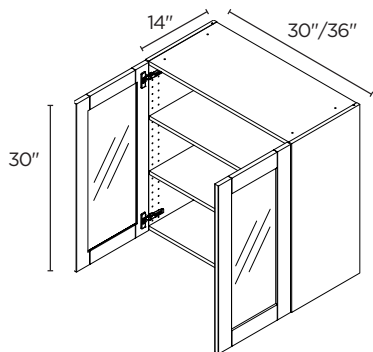
WALL CABINETS

30" HIGH / 2 GLASS DOORS*

30"	WG3030
36"	WG3630

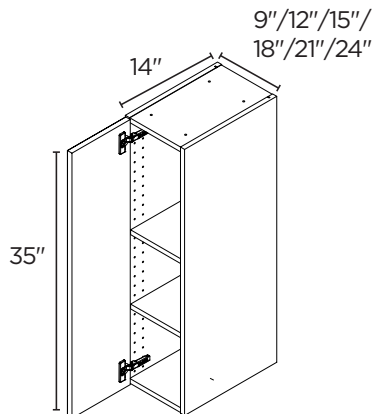
*Glass shelves can be purchased separately.

See page J-2 for glass shelf information.



35" HIGH / 1 DOOR

9"	W935(L/R)
12"	W1235(L/R)
15"	W1535(L/R)
18"	W1835(L/R)
21"	W2135(L/R)
24"	W2435(L/R)

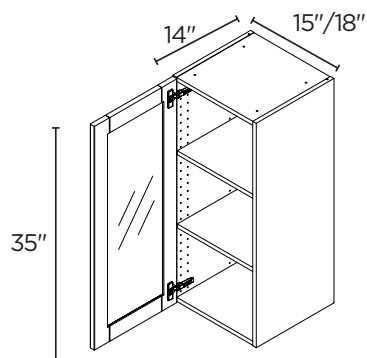


35" HIGH / 1 GLASS DOOR*

15"	WG1535(L/R)
18"	WG1835(L/R)

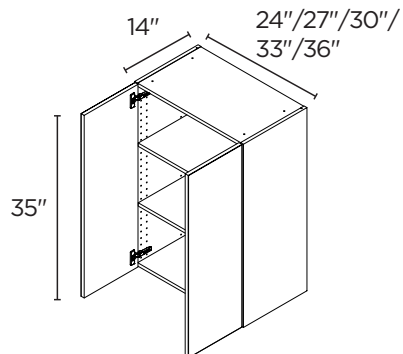
*Glass shelves can be purchased separately.

See page J-2 for glass shelf information.



35" HIGH / 2 DOORS

24"	W2435-2
27"	W2735
30"	W3035
33"	W3335
36"	W3635

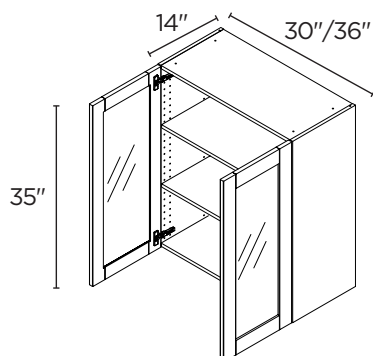


35" HIGH / 2 GLASS DOORS*

30"	WG3035
36"	WG3635

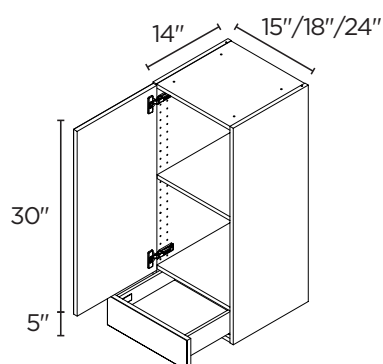
*Glass shelves can be purchased separately.

See page J-2 for glass shelf information.



35" HIGH / 1 DOOR / 1 DRAWER

15"	W1535A(L/R)WD
18"	W1835A(L/R)WD
24"	W2435A(L/R)WD



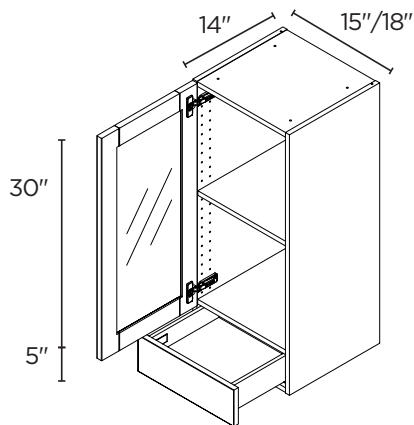
WALL CABINETS

35" HIGH / 1 GLASS DOOR* / 1 DRAWER

15"	WG1535A(L/R)WD
18"	WG1835A(L/R)WD

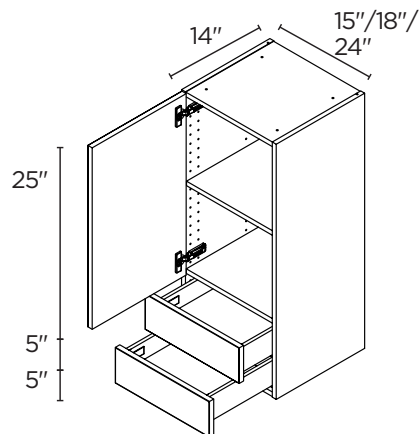
*Glass shelves can be purchased separately.

See page J-2 for glass shelf information.



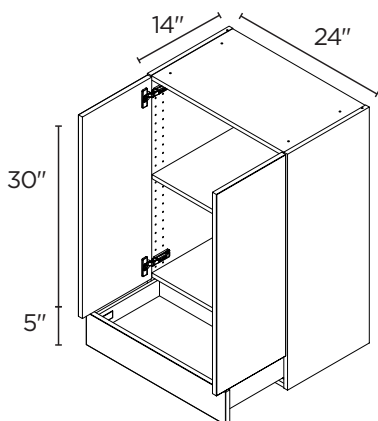
35" HIGH / 1 DOOR / 2 DRAWERS

15"	W1535B(L/R)WD
18"	W1835B(L/R)WD
24"	W2435B(L/R)WD



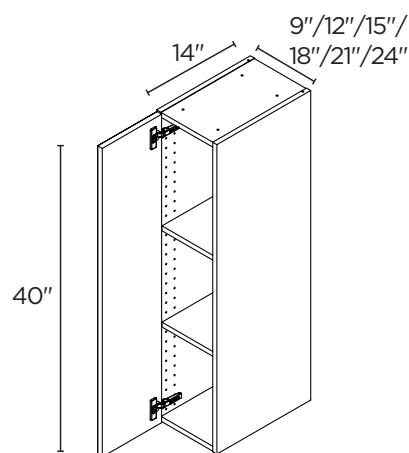
35" HIGH / 2 DOORS / 1 DRAWER

24"	W2435-2AWD
-----	------------



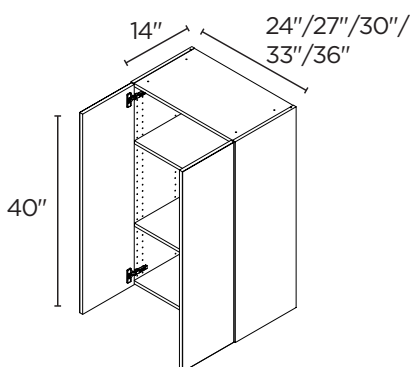
40" HIGH / 1 DOOR

9"	W940(L/R)
12"	W1240(L/R)
15"	W1540(L/R)
18"	W1840(L/R)
21"	W2140(L/R)
24"	W2440(L/R)



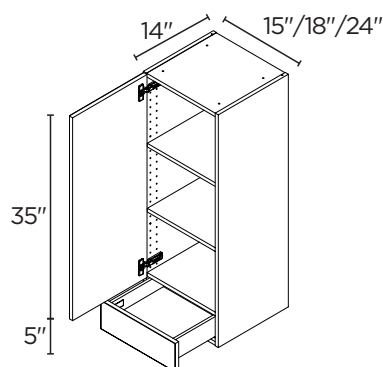
40" HIGH / 2 DOORS

24"	W2440-2
27"	W2740
30"	W3040
33"	W3340
36"	W3640



40" HIGH / 1 DOOR / 1 DRAWER*

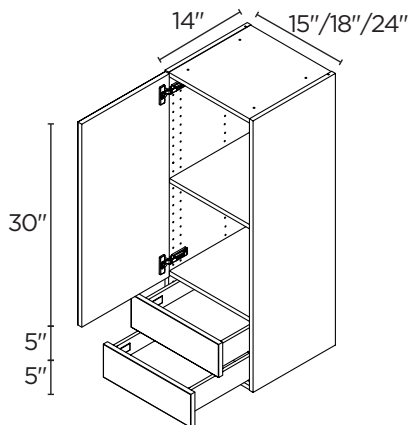
15"	W1540A(L/R)WD
18"	W1840A(L/R)WD
24"	W2440A(L/R)WD



WALL CABINETS

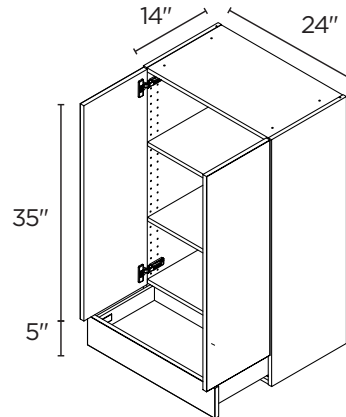
40" HIGH / 1 DOOR / 2 DRAWERS

15"	W1540B(L/R)WD
18"	W1840B(L/R)WD
24"	W2440B(L/R)WD



40" HIGH / 2 DOORS / 1 DRAWER

24"	W2440-2AWD
-----	------------

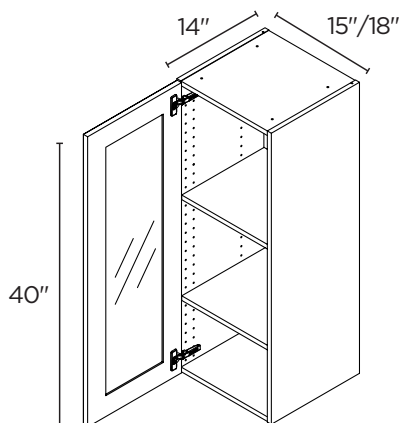


40" HIGH / 1 GLASS DOOR*

15"	WG1540(L/R)
18"	WG1840(L/R)

*Glass shelves can be purchased separately.

See page J-2 for glass shelf information.

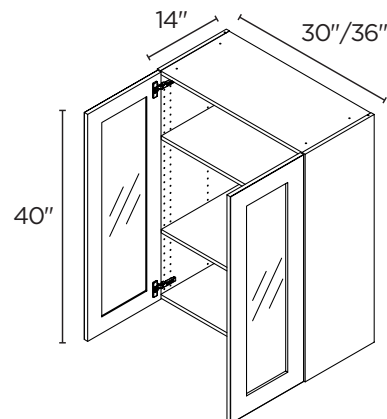


40" HIGH / 2 DOORS

30"	WG3040
36"	WG3640

*Glass shelves can be purchased separately.

See page J-2 for glass shelf information.

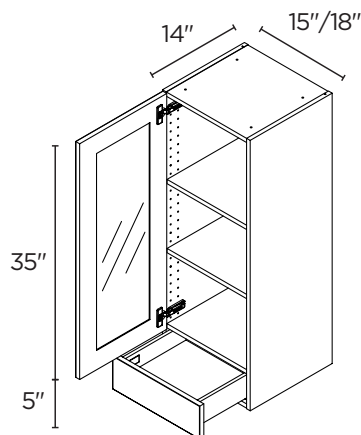


40" HIGH / 1 GLASS DOOR* / 1 DRAWER

15"	WG1540A(L/R)WD
18"	WG1840A(L/R)WD

*Glass shelves can be purchased separately.

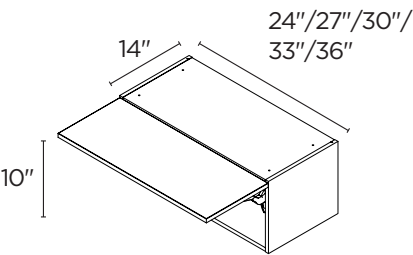
See page J-2 for glass shelf information.



WALL CABINETS

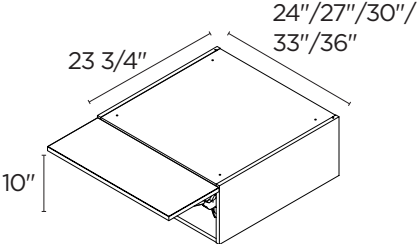
LIFT-UP WALL CABINETS

10" HIGH / 1 LIFT-UP DOOR



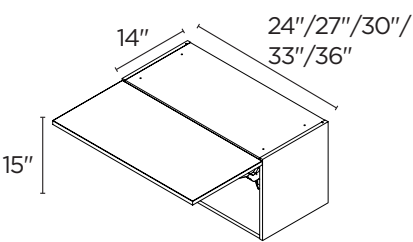
24"	WLU2410
27"	WLU2710
30"	WLU3010
33"	WLU3310
36"	WLU3610

10" HIGH / 1 LIFT-UP DOOR



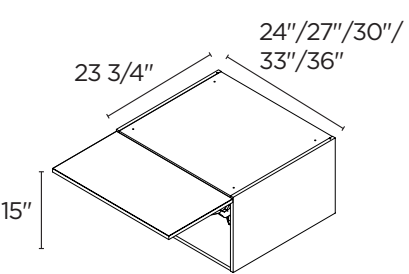
24"	WLU241024
27"	WLU271024
30"	WLU301024
33"	WLU331024
36"	WLU361024

15" HIGH / 1 LIFT-UP DOOR



24"	WLU2415
27"	WLU2715
30"	WLU3015
33"	WLU3315
36"	WLU3615

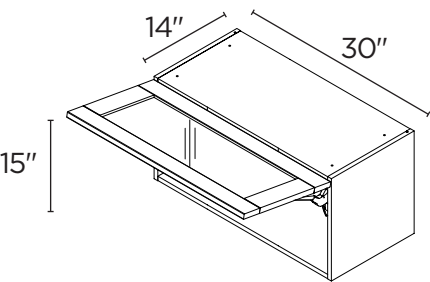
15" HIGH / 1 LIFT-UP DOOR



24"	WLU241524
27"	WLU271524
30"	WLU301524
33"	WLU331524
36"	WLU361524

15" HIGH / 1 GLASS LIFT-UP DOOR

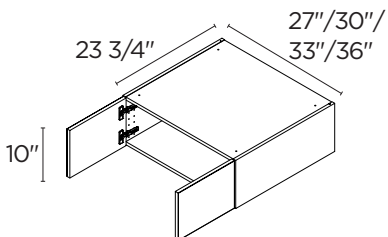
30"	WLUG3015
-----	----------



WALL CABINETS

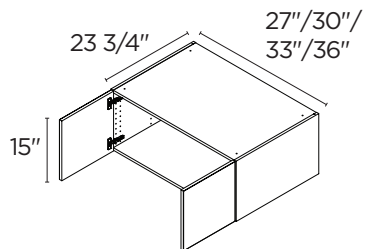
DEEP WALL CABINETS

10" HIGH / 2 DOORS



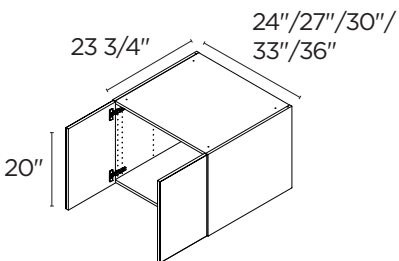
27"	W271024
30"	W301024
33"	W331024
36"	W361024

15" HIGH / 2 DOORS



27"	W271524
30"	W301524
33"	W331524
36"	W361524

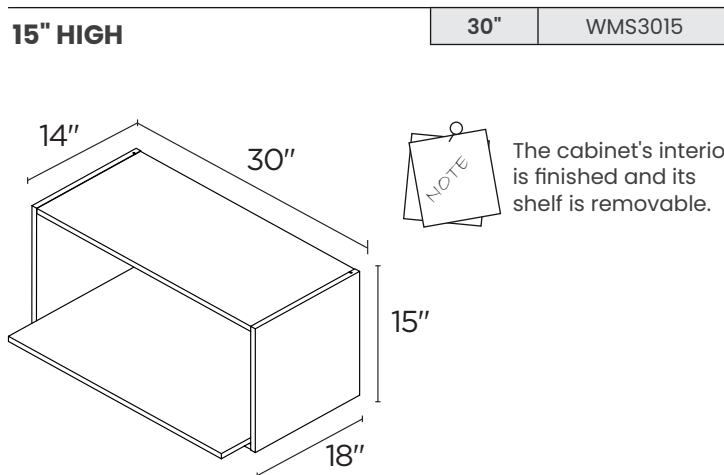
20" HIGH / 2 DOORS



24"	W242024-2
27"	W272024
30"	W302024
33"	W372024
36"	W362024

WALL MICROWAVE SHELF CABINET

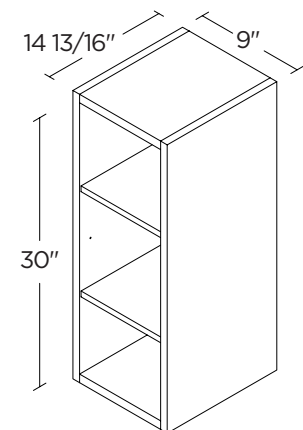
15" HIGH



30"	WMS3015
-----	---------

SPECIALTY WALL CABINETS

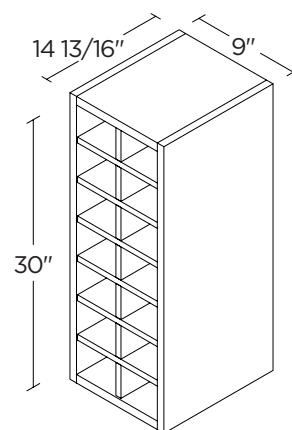
WALL OPEN SHELF



Open shelf and wine rack wall cabinets can have a vertical or horizontal installation.

9"	WOS930
----	--------

WALL WINE RACK



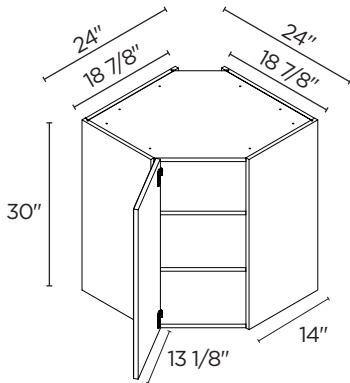
9"	WWC930
----	--------

WALL CABINETS

CORNER WALL CABINETS

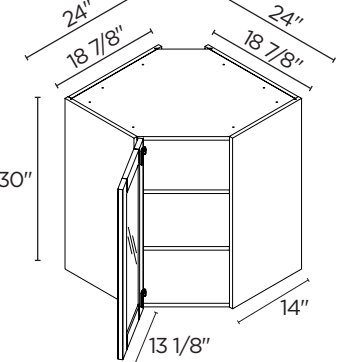
30" HIGH / 1 DOOR

24"	WA2430(L/R)
-----	-------------



30" HIGH / 1 GLASS DOOR*

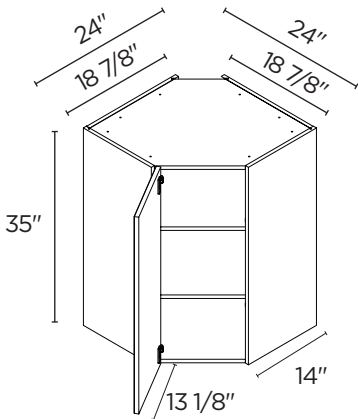
24"	WAG2430(L/R)
-----	--------------



*Glass shelves can be purchased separately.
See page J-2 for glass shelf information.

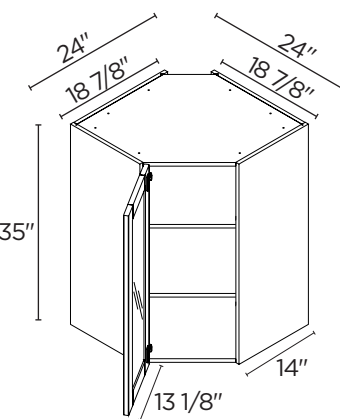
35" HIGH / 1 DOOR

24"	WA2435(L/R)
-----	-------------



35" HIGH / 1 GLASS DOOR*

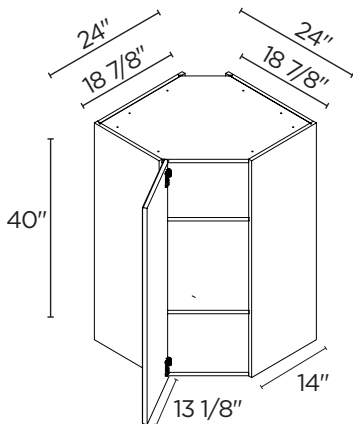
24"	WAG2435(L/R)
-----	--------------



*Glass shelves can be purchased separately.
See page J-2 for glass shelf information.

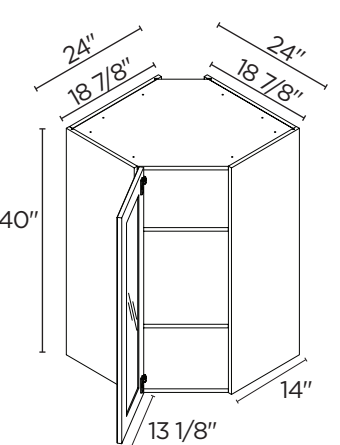
40" HIGH / 1 DOOR

24"	WA2440(L/R)
-----	-------------



40" HIGH / 1 GLASS DOOR*

24"	WAG2440(L/R)
-----	--------------



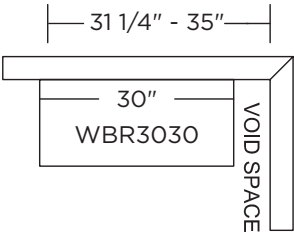
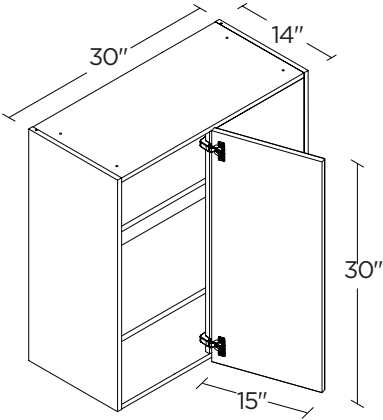
*Glass shelves can be purchased separately.
See page J-2 for glass shelf information.

WALL CABINETS

BLIND CORNER WALL CABINETS

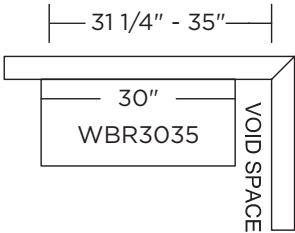
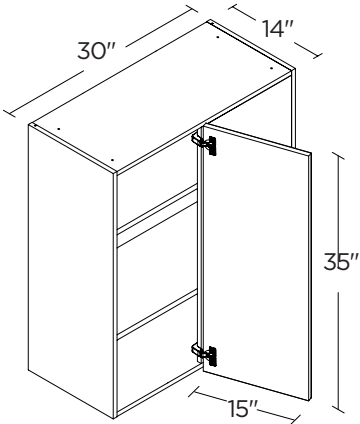
30" HIGH/1 DOOR

30"	WBL3030
30"	WBR3030



35" HIGH/1 DOOR

35"	WBL3035
35"	WBR3035



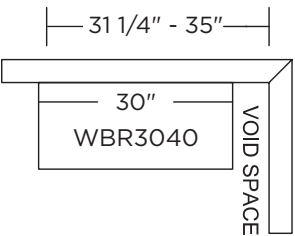
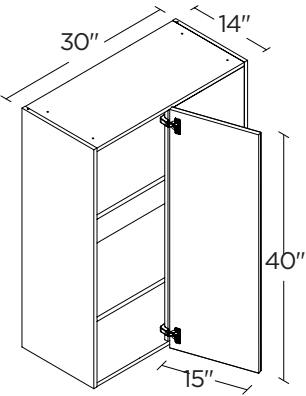
Max. 35" is with 6" filler attached to be flush with the door - The panel on the blind side features a linen pattern. Fillers are required for both the blind side and the adjacent side, and must be ordered separately.

The panel next to the door is white for all collections. A filler is required. Right-hand shown in illustrations.



40" HIGH / 1 DOOR

40"	WBL3040
40"	WBR3040

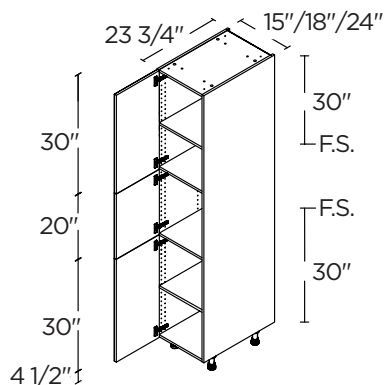


Max. 35" is with 6" filler attached to be flush with the door - The panel on the blind side features a linen pattern. Fillers are required for both the blind side and the adjacent side, and must be ordered separately.

The panel next to the door is white for all collections. A filler is required. Right-hand shown in illustrations.

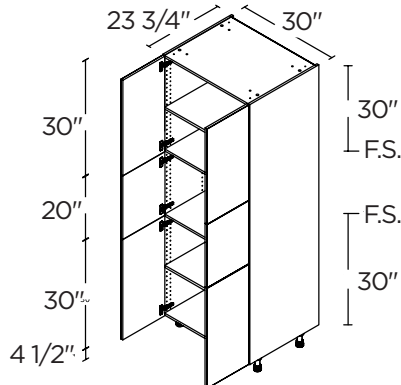
84 1/2"H TALL CABINETS

3 DOORS



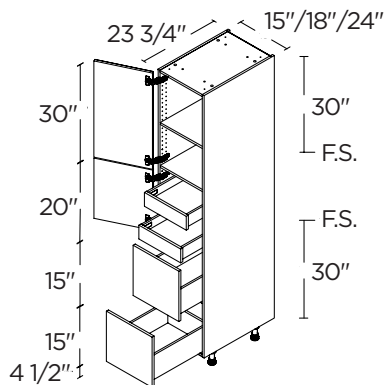
15"	T152484.5(L/R)
18"	T182484.5(L/R)
24"	T242484.5(L/R)

6 DOORS



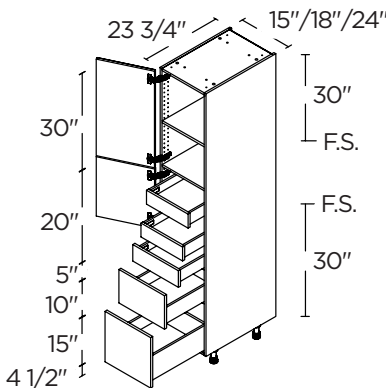
30"	T302484.5
-----	-----------

2 DOORS / 2 DRAWERS / 2 INNER DRAWERS



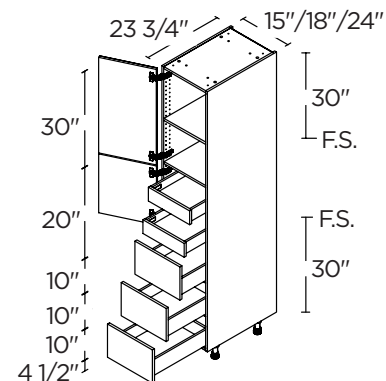
15"	T2D1584I2(L/R)WD
18"	T2D1884I2(L/R)WD
24"	T2D2484I2(L/R)WD

2 DOORS / 3 DRAWERS / 2 INNER DRAWERS



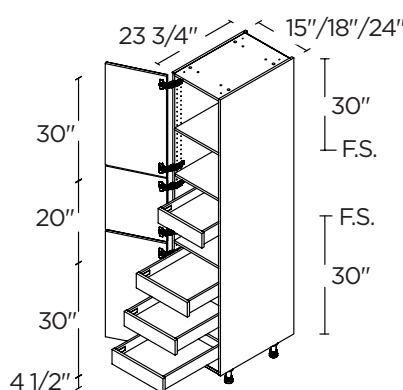
15"	T3D1584I2(L/R)WD
18"	T3D1884I2(L/R)WD
24"	T3D2484I2(L/R)WD

2 DOORS / 3 DRAWERS / 2 INNER DRAWERS



15"	T3DA1584I2(L/R)WD
18"	T3DA1884I2(L/R)WD
24"	T3DA2484I2(L/R)WD

3 DOORS / 4 INNER DRAWERS



15"	T1584I4(L/R)WD
18"	T1884I4(L/R)WD
24"	T2484I4(L/R)WD

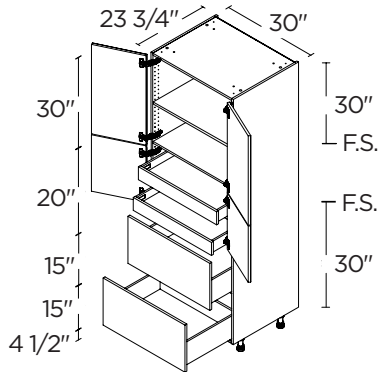
RS = Reinforced Shelf. FS = Fixed Shelf. Appliance cut-out sizes: (use of a filler is required and must be ordered separately): ¹28 1/2" width x 18 1/2" high. ²28 1/2" width x 43 1/2" high. ³28 1/2" width x 53 1/2" high. ⁴28 1/2" width x 28 1/2" high.

84 1/2"H TALL CABINETS

4 DOORS / 2 DRAWERS / 2 INNER DRAWERS

30"

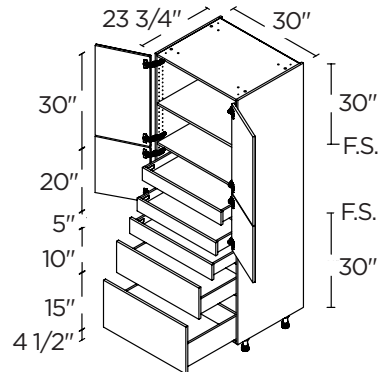
T2D3084I2WD



4 DOORS / 3 DRAWERS / 2 INNER DRAWERS

30"

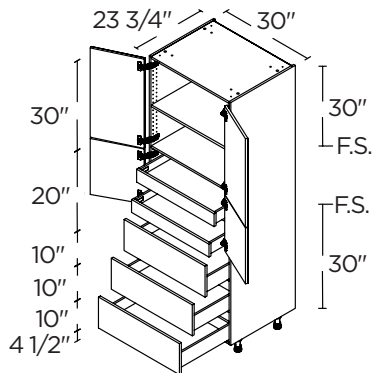
T3D3084I2WD



4 DOORS / 3 DRAWERS / 2 INNER DRAWERS

30"

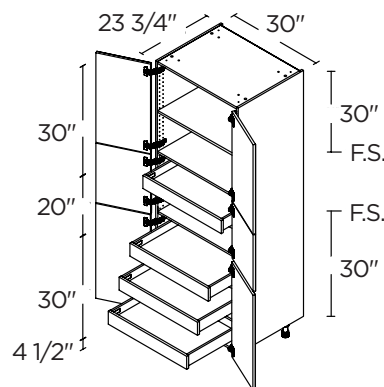
T3DA3084I2WD



6 DOORS / 4 INNER DRAWERS

30"

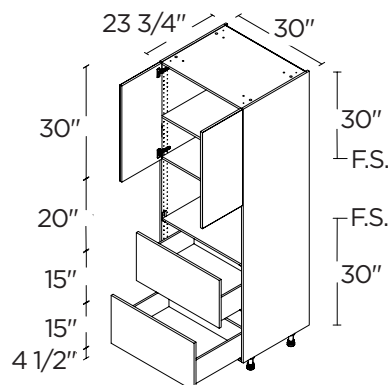
T3084I4WD



MICROWAVE¹ 2 DOORS / 2 DRAWERS

30"

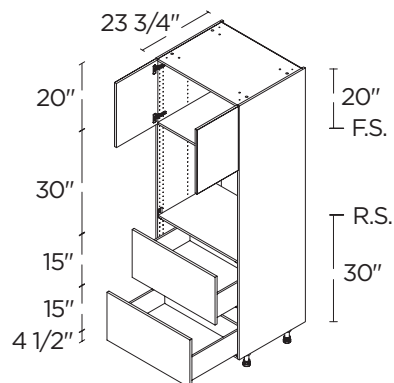
TM2D3084WD



MICROWAVE¹ 2 DOORS / 2 DRAWERS

30"

TO2D3084WD

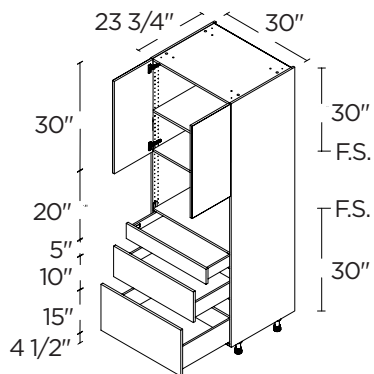


RS = Reinforced Shelf. FS = Fixed Shelf. Appliance cut-out sizes: (use of a filler is required and must be ordered separately): ¹28 1/2" width x 18 1/2" high. ²28 1/2" width x 43 1/2" high. ³28 1/2" width x 53 1/2" high. ⁴28 1/2" width x 28 1/2" high.

84 1/2"H TALL CABINETS

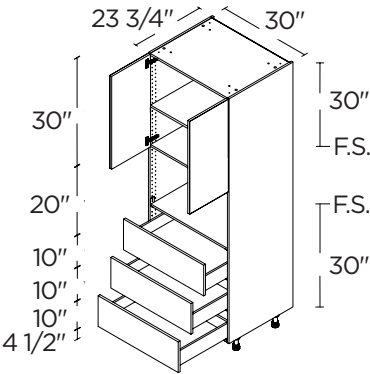
MICROWAVE ¹
2 DOORS / 3 DRAWERS

30" TM3D3084WD



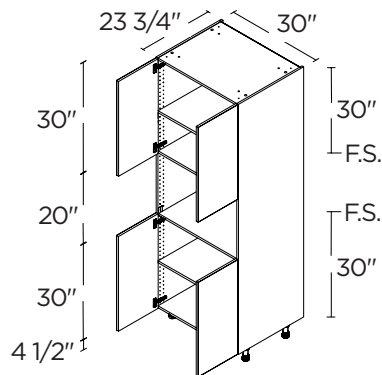
MICROWAVE ¹
2 DOORS / 3 DRAWERS

30" TM3DA3084WD



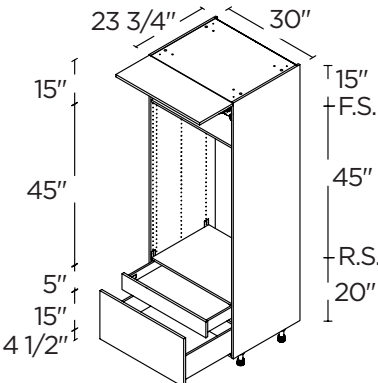
MICROWAVE ¹ / 4 DOORS

30" TM3084.5



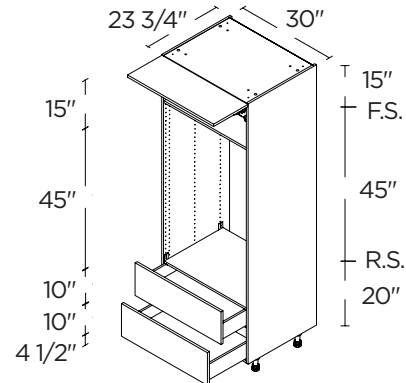
MICRO/WALL OVEN ²
1 LIFT-UP DOOR / 2 DRAWERS

30" TMOL2D3084WD



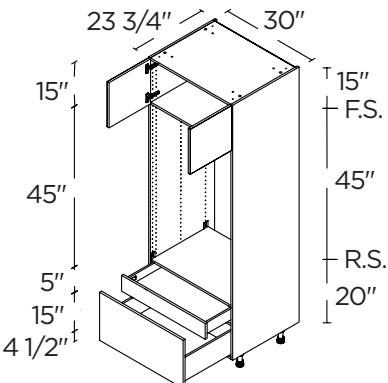
MICRO/WALL OVEN ²
1 LIFT-UP DOOR / 2 DRAWERS

30" TMOL2DA3084WD



MICRO/WALL OVEN ²
2 DOORS / 2 DRAWERS

30" TMO2D3084WD

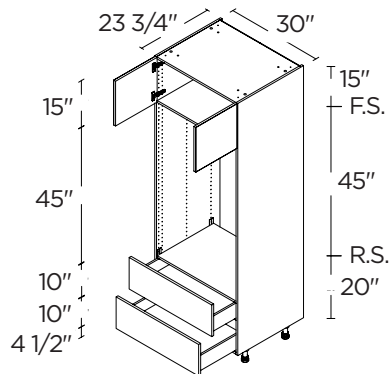


RS = Reinforced Shelf. FS = Fixed Shelf. Appliance cut-out sizes: (use of a filler is required and must be ordered separately): ¹28 1/2" width x 18 1/2" high. ²28 1/2" width x 43 1/2" high. ³28 1/2" width x 53 1/2" high. ⁴28 1/2" width x 28 1/2" high.

84 1/2"H TALL CABINETS

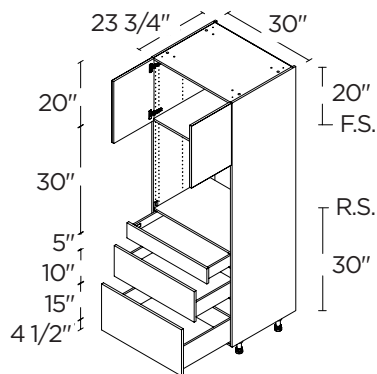
MICRO/WALL OVEN ²
2 DOORS / 2 DRAWERS

30" TMO2DA3084WD



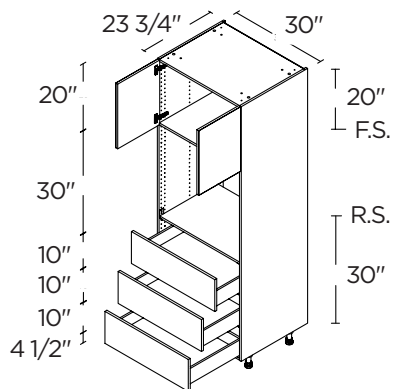
SINGLE OVEN ⁴
2 DOORS / 3 DRAWERS

30" TO3D3084WD



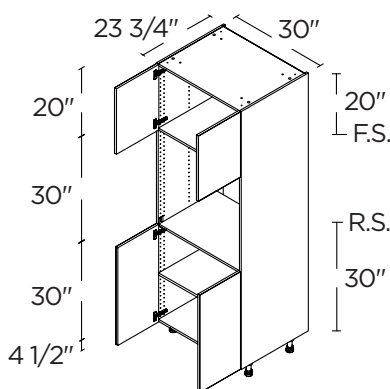
SINGLE OVEN ⁴
2 DOORS / 3 DRAWERS

30" TO3DA3084WD



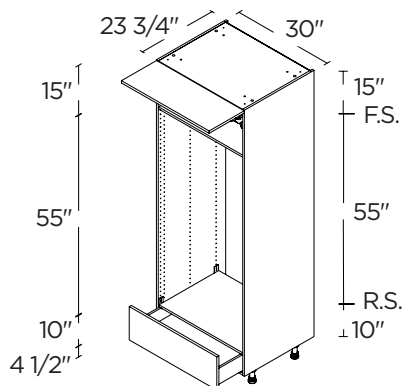
SINGLE OVEN ⁴ / 4 DOORS

30" TO3084.5



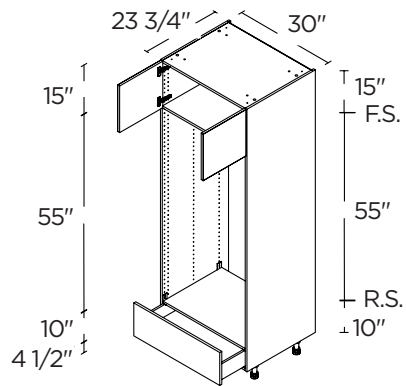
DOUBLE OVEN ³
1 LIFT-UP DOOR / 1 DRAWER

30" TDOLA3084WD



DOUBLE OVEN ³
2 DOORS / 1 DRAWER

30" TDOA3084WD

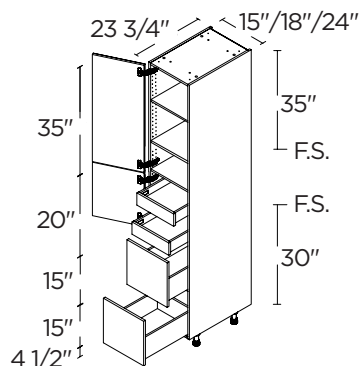


RS = Reinforced Shelf. FS = Fixed Shelf. Appliance cut-out sizes: (use of a filler is required and must be ordered separately): ¹28 1/2" width x 18 1/2" high. ²28 1/2" width x 43 1/2" high. ³28 1/2" width x 53 1/2" high. ⁴28 1/2" width x 28 1/2" high.

89 1/2" H TALL CABINETS

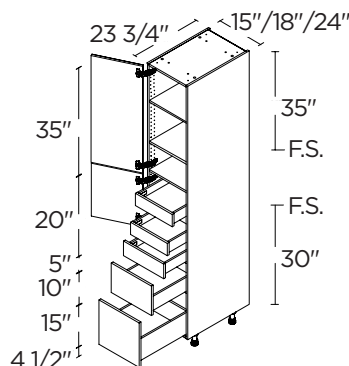
2 DOORS / 2 DRAWERS / 2 INNER DRAWERS

15"	T2D1589I2(L/R)WD
18"	T2D1889I2(L/R)WD
24"	T2D2489I2(L/R)WD



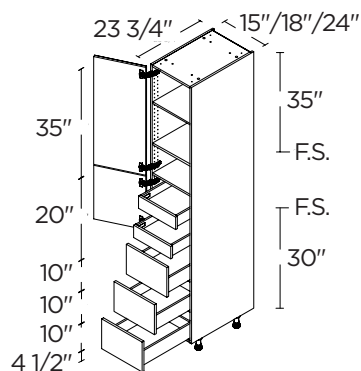
2 DOORS / 3 DRAWERS / 2 INNER DRAWERS

15"	T3D1589I2(L/R)WD
18"	T3D1889I2(L/R)WD
24"	T3D2489I2(L/R)WD



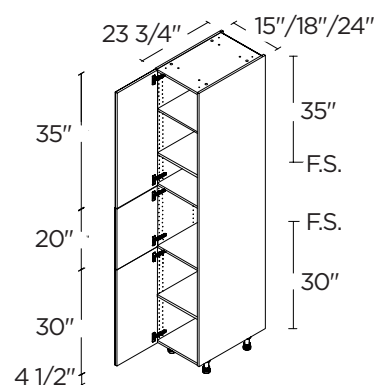
2 DOORS / 3 DRAWERS / 2 INNER DRAWERS

15"	T3DA1589I2(L/R)WD
18"	T3DA1889I2(L/R)WD
24"	T3DA2489I2(L/R)WD



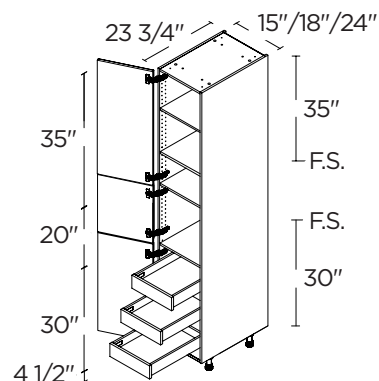
3 DOORS

15"	T152489.5(L/R)
18"	T182489.5(L/R)
24"	T242489.5(L/R)



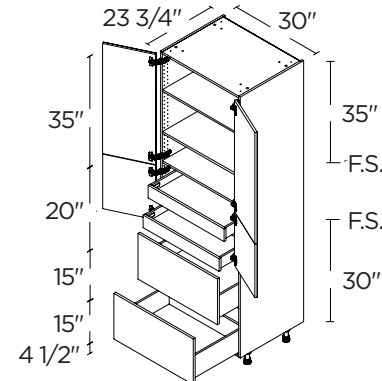
3 DOORS / 3 INNER DRAWERS

15"	T1589I3(L/R)WD
18"	T1889I3(L/R)WD
24"	T2489I3(L/R)WD



4 DOORS / 2 DRAWERS / 2 INNER DRAWERS

30"	T2D3089I2WD
-----	-------------



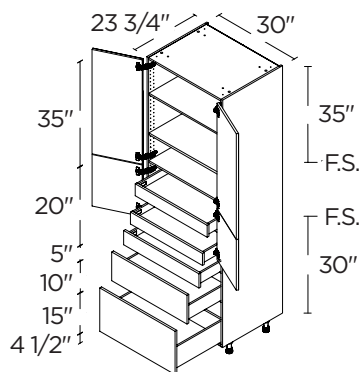
RS = Reinforced Shelf. FS = Fixed Shelf. Appliance cut-out sizes: (use of a filler is required and must be ordered separately): ¹28 1/2" width x 18 1/2" high. ²28 1/2" width x 43 1/2" high. ³28 1/2" width x 53 1/2" high. ⁴28 1/2" width x 28 1/2" high.

89 1/2"H TALL CABINETS

4 DOORS / 3 DRAWERS 2 INNER DRAWERS

30"

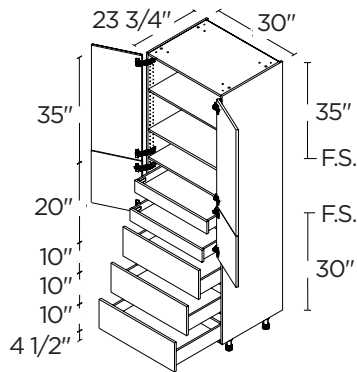
T3D3089I2WD



4 DOORS / 3 DRAWERS 2 INNER DRAWERS

30"

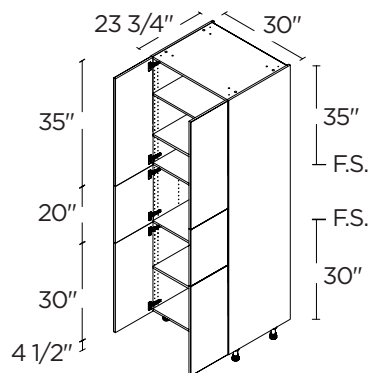
T3DA3089I2WD



6 DOORS

30"

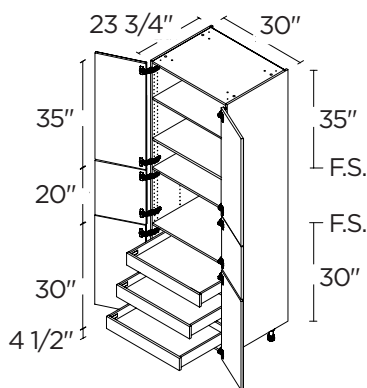
T302489.5



6 DOORS / 3 INNER DRAWERS

30"

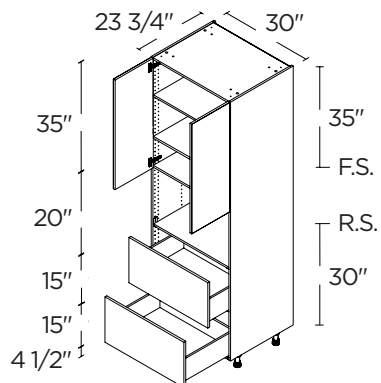
T3089I3WD



MICROWAVE¹ 2 DOORS / 2 DRAWERS

30"

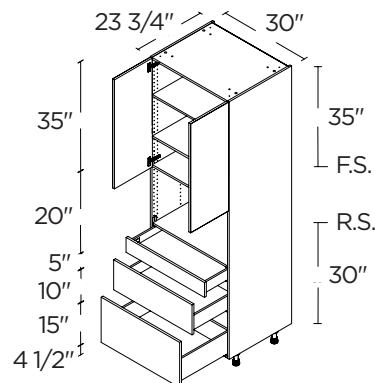
TM2D3089WD



MICROWAVE¹ 2 DOORS / 3 DRAWERS

30"

TM3D3089WD



RS = Reinforced Shelf. FS = Fixed Shelf. Appliance cut-out sizes: (use of a filler is required and must be ordered separately): ¹28 1/2" width x 18 1/2" high. ²28 1/2" width x 43 1/2" high. ³28 1/2" width x 53 1/2" high. ⁴28 1/2" width x 28 1/2" high.

89 1/2"H TALL CABINETS

MICROWAVE ¹ 2 DOORS / 3 DRAWERS

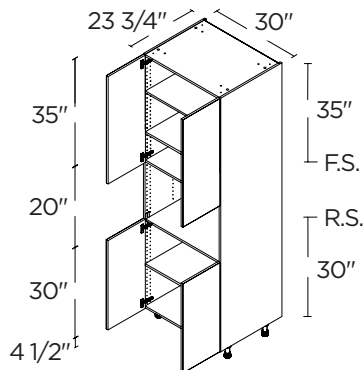
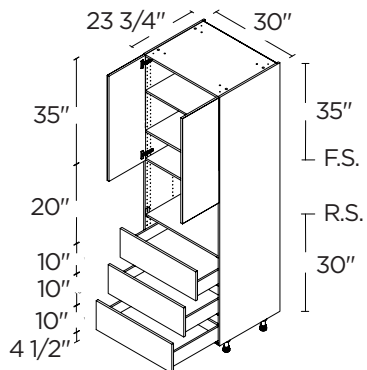
30"

TM3DA3089WD

MICROWAVE ¹ 4 DOORS

30"

TM3089.5



MICRO/WALL OVEN ² 2 DOORS / 2 DRAWERS

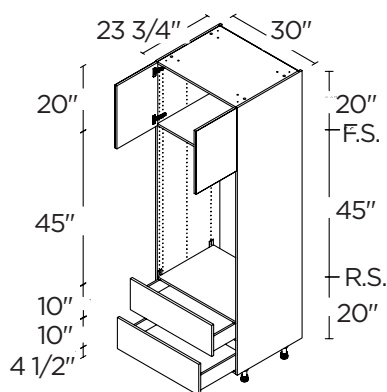
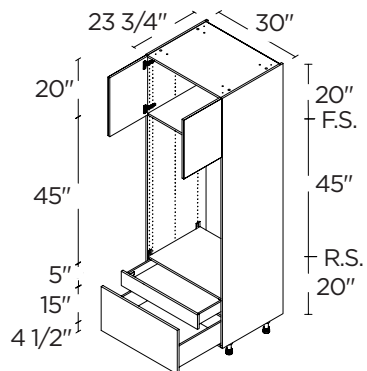
30"

TMO2D3089WD

MICRO/WALL OVEN ² 2 DOORS / 2 DRAWERS

30"

TMO2DA3089WD



SINGLE OVEN ³ 2 DOORS / 2 DRAWERS

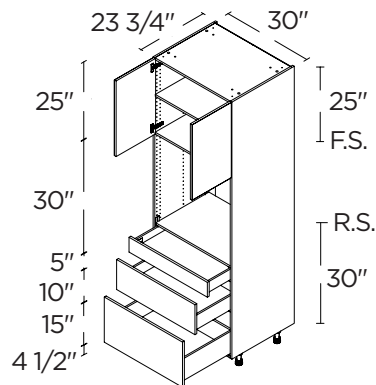
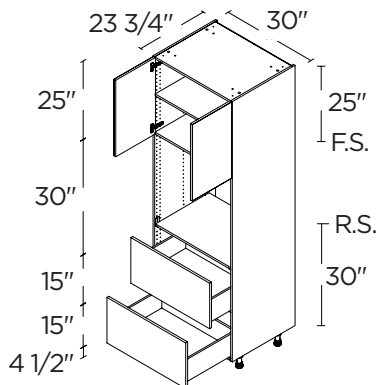
30"

TO2D3089WD

SINGLE OVEN ³ 2 DOORS / 3 DRAWERS

30"

TO3D3089WD

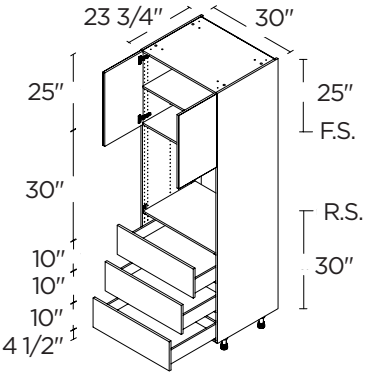


RS = Reinforced Shelf. FS = Fixed Shelf. Appliance cut-out sizes: (use of a filler is required and must be ordered separately): ¹28 1/2" width x 18 1/2" high. ²28 1/2" width x 43 1/2" high. ³28 1/2" width x 53 1/2" high. ⁴28 1/2" width x 28 1/2" high.

89 1/2"H TALL CABINETS

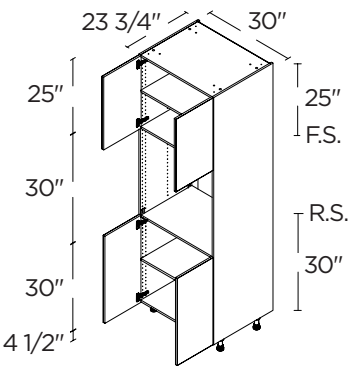
SINGLE OVEN ³
2 DOORS / 3 DRAWERS

30"	TO3DA3089WD
-----	-------------



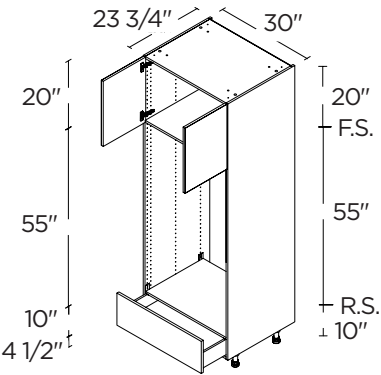
SINGLE OVEN ³ 4 DOORS

30"	TO3089.5
-----	----------



DOUBLE OVEN ³
2 DOORS / 1 DRAWER

30"	TDOA3089WD
-----	------------

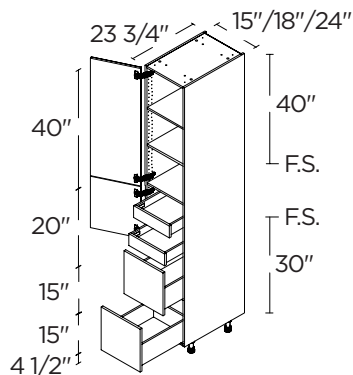


RS = Reinforced Shelf. FS = Fixed Shelf. Appliance cut-out sizes: (use of a filler is required and must be ordered separately): ¹ 28 1/2" width x 18 1/2" high. ² 28 1/2" width x 43 1/2" high. ³ 28 1/2" width x 53 1/2" high. ⁴ 28 1/2" width x 28 1/2" high.

94 1/2" H TALL CABINETS

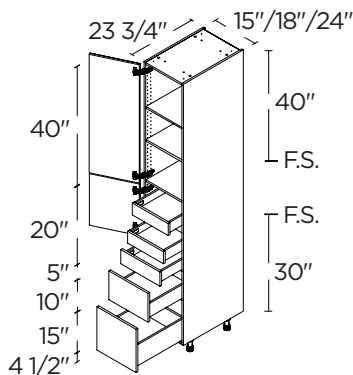
2 DOORS / 2 DRAWERS / 2 INNER DRAWERS

15"	T2D1594I2(L/R)WD
18"	T2D1894I2(L/R)WD
24"	T2D2494I2(L/R)WD



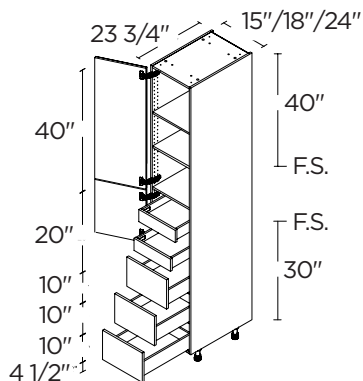
2 DOORS / 3 DRAWERS / 2 INNER DRAWERS

15"	T3D1594I2(L/R)WD
18"	T3D1894I2(L/R)WD
24"	T3D2494I2(L/R)WD



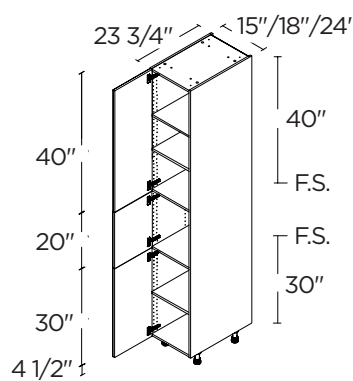
2 DOORS / 3 DRAWERS / 2 INNER DRAWERS

15"	T3DA1594I2(L/R)WD
18"	T3DA1894I2(L/R)WD
24"	T3DA2494I2(L/R)WD



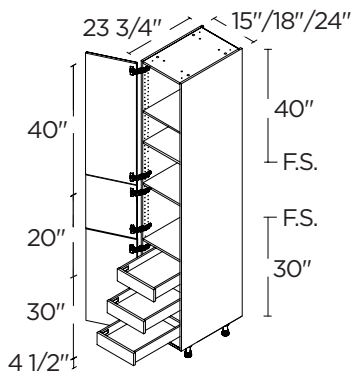
3 DOORS

15"	T152494.5(L/R)
18"	T182494.5(L/R)
24"	T242494.5(L/R)



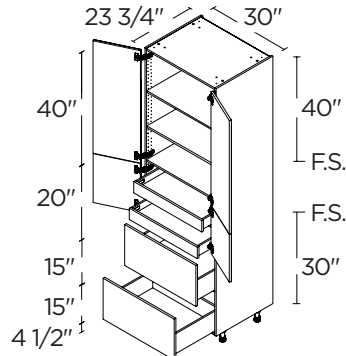
3 DOORS / 3 INNER DRAWERS

15"	T1594I3(L/R)WD
18"	T1894I3(L/R)WD
24"	T2494I3(L/R)WD



4 DOORS / 2 DRAWERS / 2 INNER DRAWERS

30"	T2D3094I2WD
-----	-------------



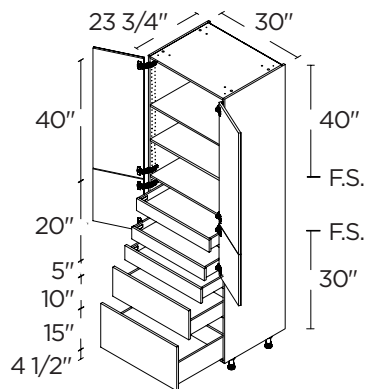
RS = Reinforced Shelf. FS = Fixed Shelf. Appliance cut-out sizes: (use of a filler is required and must be ordered separately): ¹28 1/2" width x 18 1/2" high. ²28 1/2" width x 43 1/2" high. ³28 1/2" width x 53 1/2" high. ⁴28 1/2" width x 28 1/2" high.

94 1/2"H TALL CABINETS

4 DOORS / 3 DRAWERS 2 INNER DRAWERS

30"

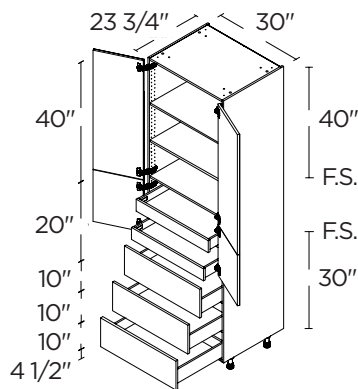
T3D3094I2WD



4 DOORS / 3 DRAWERS 2 INNER DRAWERS

30"

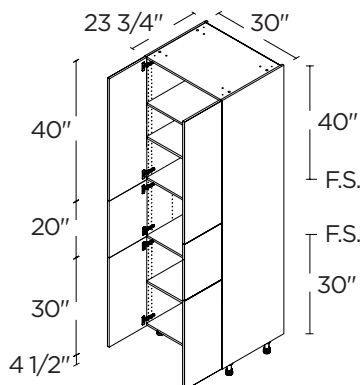
T3DA3094I2WD



6 DOORS

30"

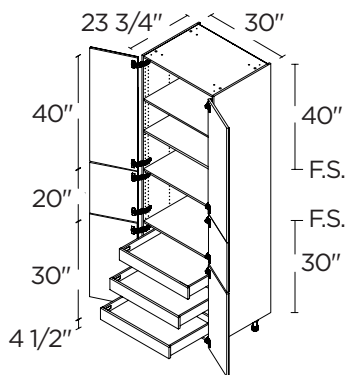
T302494.5



6 DOORS / 3 INNER DRAWERS

30"

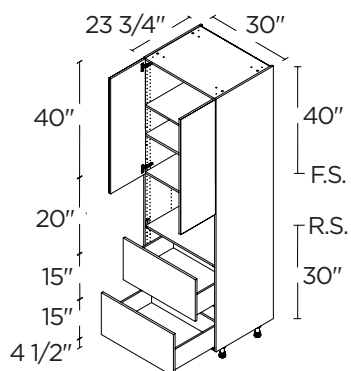
T3094I3WD



MICROWAVE ¹ 2 DOORS / 2 DRAWERS

30"

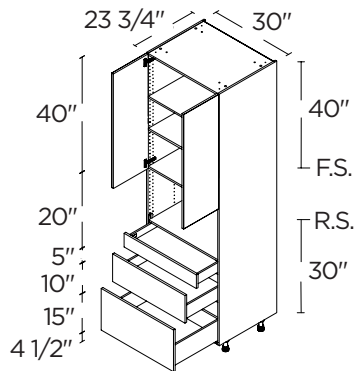
TM2D3094WD



MICROWAVE ¹ 2 DOORS / 3 DRAWERS

30"

TM3D3094WD



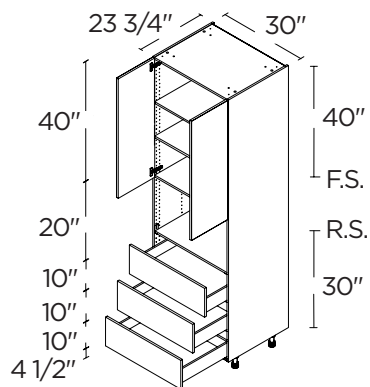
RS = Reinforced Shelf. FS = Fixed Shelf. Appliance cut-out sizes: (use of a filler is required and must be ordered separately): ¹28 1/2" width x 18 1/2" high. ²28 1/2" width x 43 1/2" high. ³28 1/2" width x 53 1/2" high. ⁴28 1/2" width x 28 1/2" high.

94 1/2"H TALL CABINETS

MICROWAVE¹ 2 DOORS / 3 DRAWERS

30"

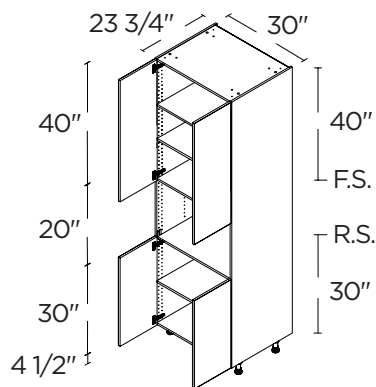
TM3DA3094WD



MICROWAVE¹/4 DOORS

30"

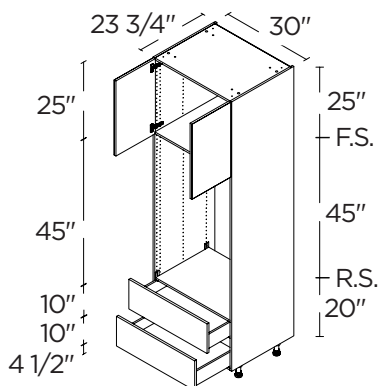
TM3094.5



MICROWAVE¹ 2 DOORS / 2 DRAWERS

30"

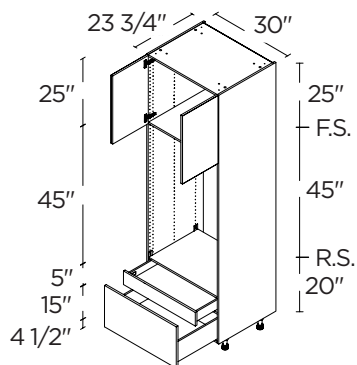
TMO2DA3094WD



MICRO/WALL OVEN² 2 DOORS / 2 DRAWERS

30"

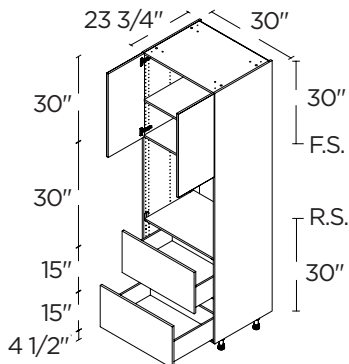
TMO2D3094WD



SINGLE OVEN³ 2 DOORS / 2 DRAWERS

30"

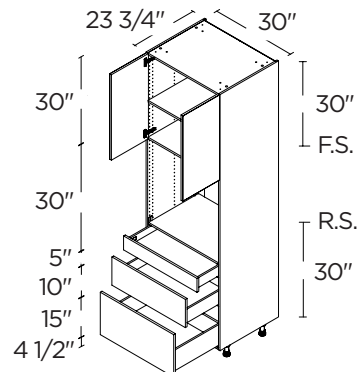
TO2D3094WD



SINGLE OVEN³ 2 DOORS / 3 DRAWERS

30"

TO3D3094WD

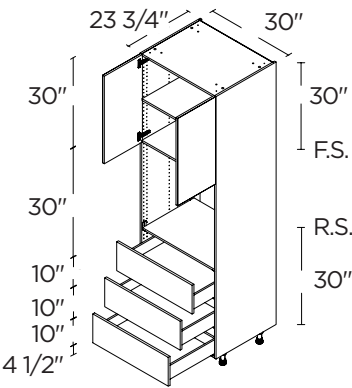


RS = Reinforced Shelf. FS = Fixed Shelf. Appliance cut-out sizes: (use of a filler is required and must be ordered separately): ¹28 1/2" width x 18 1/2" high. ²28 1/2" width x 43 1/2" high. ³28 1/2" width x 53 1/2" high. ⁴28 1/2" width x 28 1/2" high.

94 1/2"H TALL CABINETS

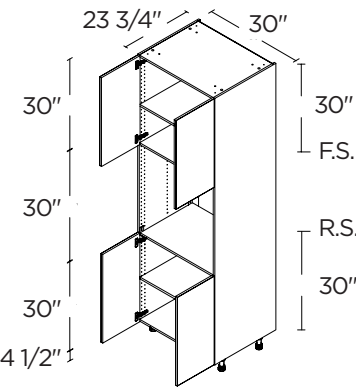
SINGLE OVEN³
2 DOORS / 3 DRAWERS

30"	TO3DA3094WD
-----	-------------



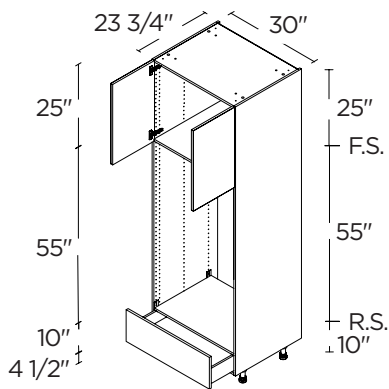
SINGLE OVEN³
4 DOORS

30"	TO3094.5
-----	----------



DOUBLE OVEN³
2 DOORS / 1 DRAWER

30"	TDOA3094WD
-----	------------



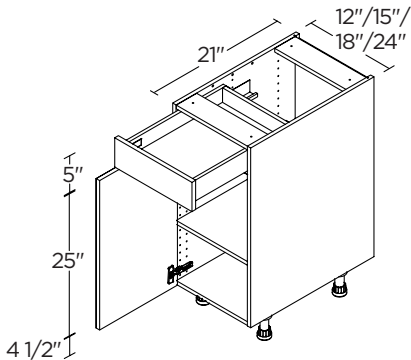
RS = Reinforced Shelf. FS = Fixed Shelf. Appliance cut-out sizes: (use of a filler is required and must be ordered separately): ¹ 28 1/2" width x 18 1/2" high. ² 28 1/2" width x 43 1/2" high. ³ 28 1/2" width x 53 1/2" high. ⁴ 28 1/2" width x 28 1/2" high.

STANDARD VANITY CABINETS



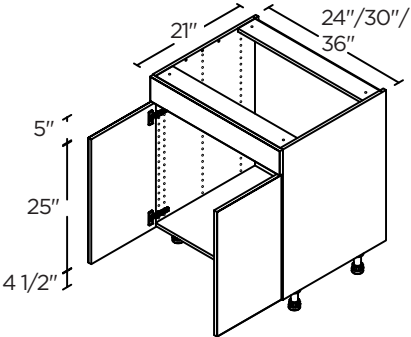
All cabinets are produced with white interiors.
Vanity cabinets are not available with dovetail drawers.

1 DOOR / 1 DRAWER



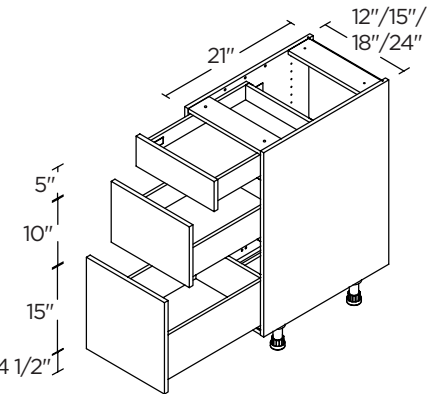
12"	V12(L/R)
15"	V15(L/R)
18"	V18(L/R)
24"	V24(L/R)

2 DOORS



24"	VS24
30"	VS30
36"	VS36

3 DRAWERS



12"	V3D12
15"	V3D15
18"	V3D18
24"	V3D24

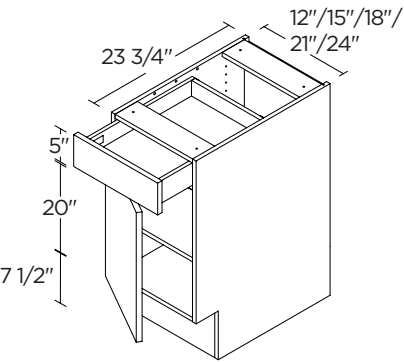
ADA KITCHEN CABINETS



All cabinets are produced with white interiors.
We recommend working with a licensed and experienced contractor to ensure your installation complies with all applicable local, state, and federal ADA requirements.

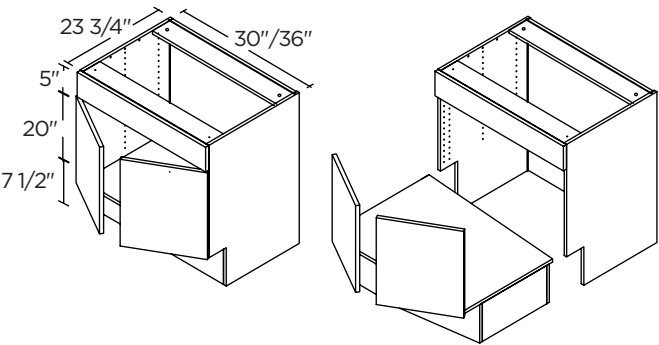
1 DOOR / 1 DRAWER

12"	B12ADAWD
15"	B15ADAWD
18"	B18ADAWD
21"	B21ADAWD
24"	B24ADAWD



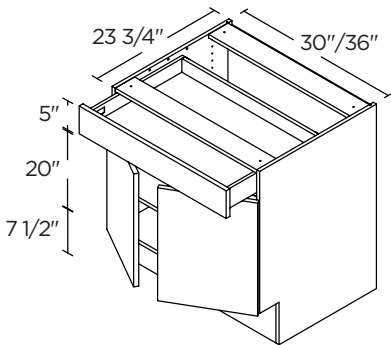
2 DOORS / 1 REMOVABLE FRONT

30"	SB30FFRFADA
36"	SB36FFRFADA



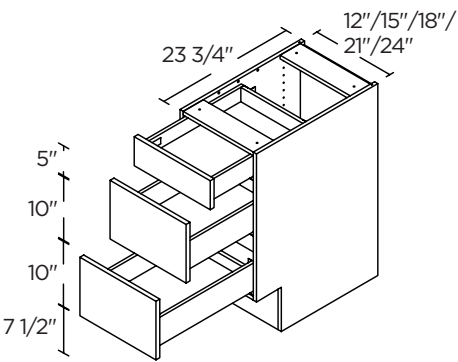
2 DOORS / 1 DRAWER

30"	B30ADAWD
36"	B36ADAWD



3 DRAWERS

12"	B3D12ADAWD
15"	B3D15ADAWD
18"	B3D18ADAWD
21"	B3D21ADAWD
24"	B3D24ADAWD

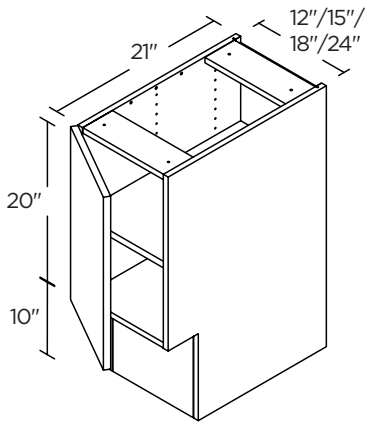


ADA VANITY CABINETS



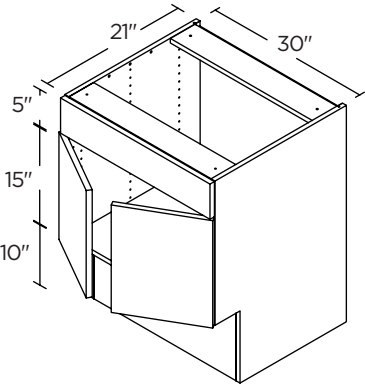
All cabinets are produced with white interiors.
Vanity cabinets are not available with dovetail drawers.
We recommend working with a licensed and experienced contractor to ensure your installation complies with all applicable local, state, and federal ADA requirements.

1 DOOR



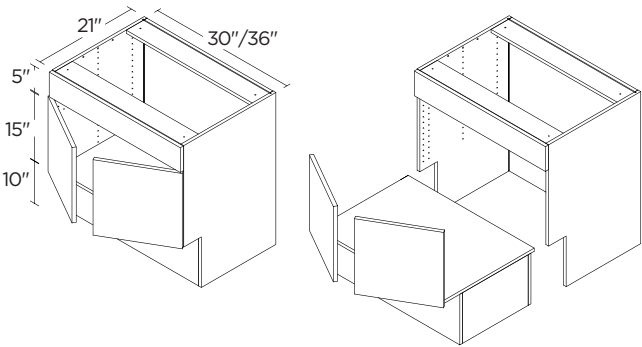
12"	V12ADA(L/R)
15"	V15ADA(L/R)
18"	V18ADA(L/R)
24"	V24ADA(L/R)

2 DOORS



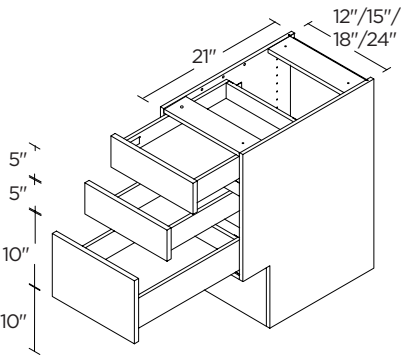
30"	VS30ADA
-----	---------

2 DOORS / 1 REMOVABLE FRONT



30"	VS30FFRFADA
36"	VS36FFRFADA

3 DRAWERS

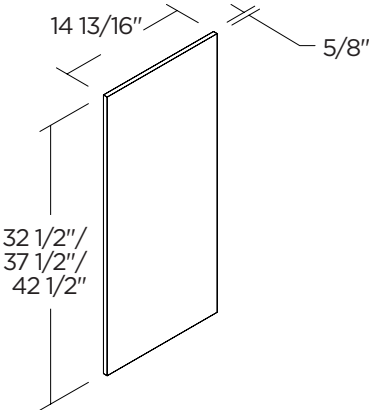


12"	V3D12ADA
15"	V3D15ADA
18"	V3D18ADA
24"	V3D24ADA

COLOR-MATCHED ACCESSORIES

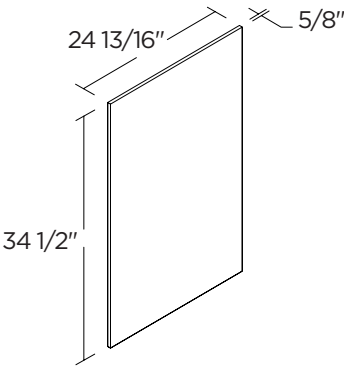
WALL CABINET
COVER PANEL 14 13/16"

5/8 x 32 1/2"	CP1432
5/8 x 37 1/2"	CP1437
5/8 x 42 1/2"	CP1442



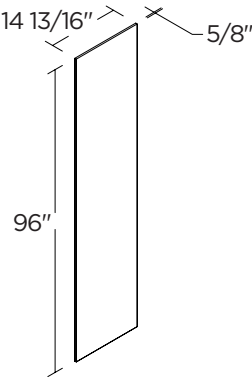
BASE CABINET
COVER PANEL 24 13/16"

5/8 x 34 1/2"	CP2434
---------------	--------



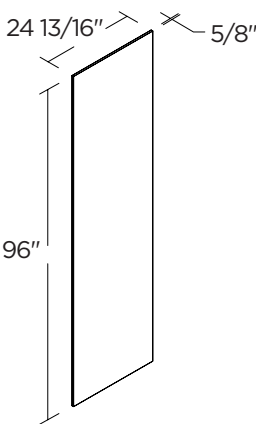
TALL CABINET COVER PANEL
14 13/16"

5/8 x 96"	CP1496
-----------	--------



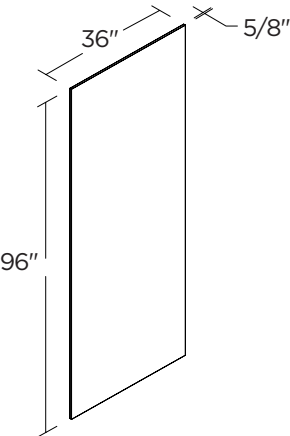
TALL CABINET
COVER PANEL 24 13/16"

5/8 x 96"	CP2496
-----------	--------



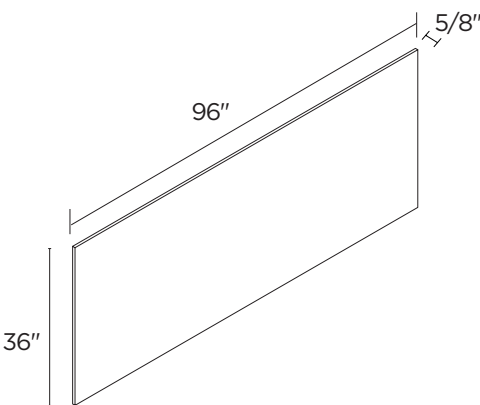
TALL CABINET& FRIDGE
GABLE COVER PANEL 36"

5/8 x 96"	CP3696
-----------	--------



ISLAND PANEL 36"

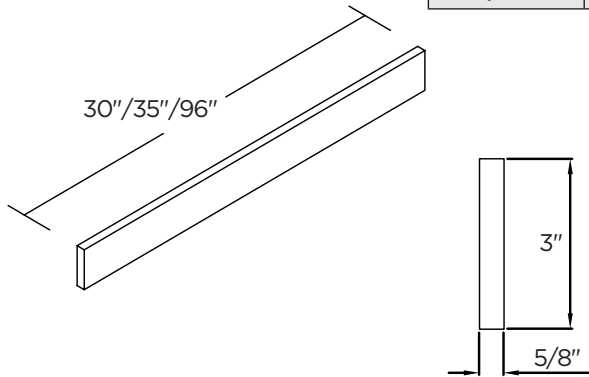
5/8 x 96"	CP3696
-----------	--------



COLOR-MATCHED ACCESSORIES

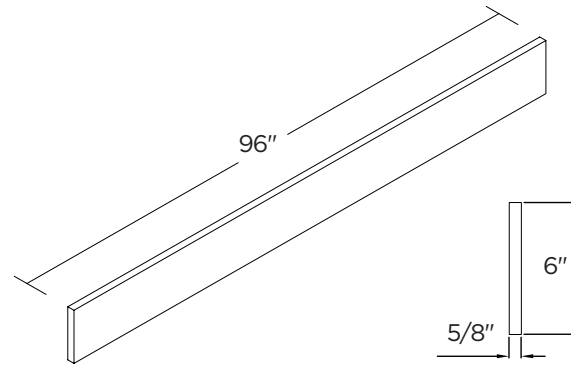
FILLER

$3 \times \frac{5}{8} \times 30"$	F330
$3 \times \frac{5}{8} \times 35"$	F335
$3 \times \frac{5}{8} \times 96"$	F396



FILLER

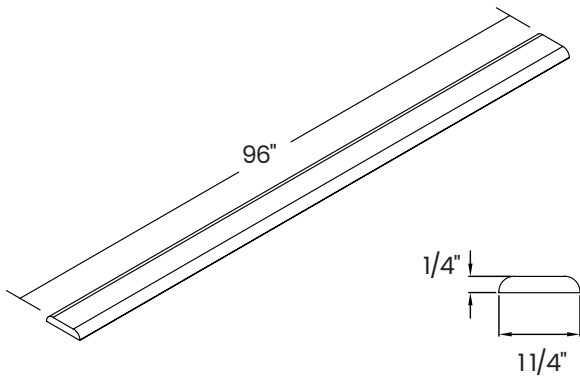
$6 \times \frac{5}{8} \times 96"$	F696
-----------------------------------	------



SCRIBE MOLDING

$96 \times \frac{1}{4} \times 1 \frac{1}{4}"$	SBM96
---	-------

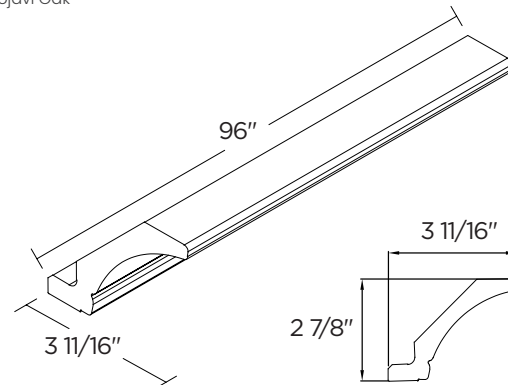
Not available for Glenwood-Burnt Walnut & Mojavi Oak



COVE CROWN MOLDING

$96 \times 3 \frac{11}{16} \times 2 \frac{7}{8}"$	CCM96C
---	--------

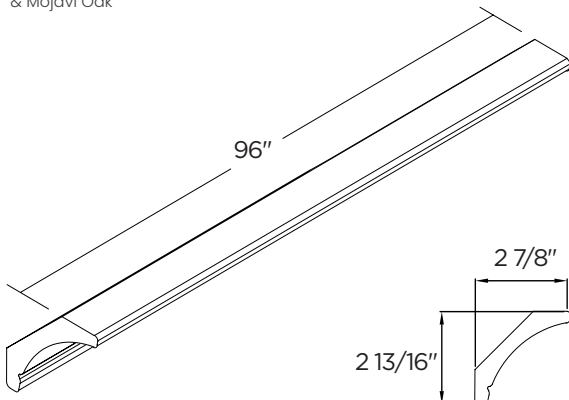
With integrated cleat
Not available for Glenwood-Burnt Walnut & Mojavi Oak



COVE CROWN MOLDING

$96 \times 2 \frac{13}{16} \times 2 \frac{7}{8}"$	CCM96NC
---	---------

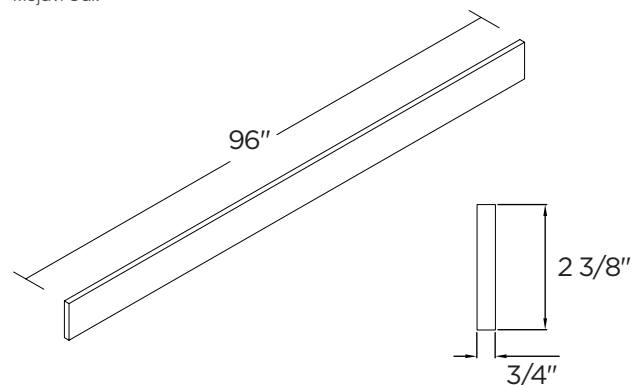
Without cleat
Not available for Glenwood-Burnt Walnut & Mojavi Oak



STRAIGHT LIGHT VALANCE MOLDING

$96 \times 2 \frac{3}{8} \times \frac{3}{4}"$	SLV96
---	-------

Not available for Glenwood-Burnt Walnut & Mojavi Oak

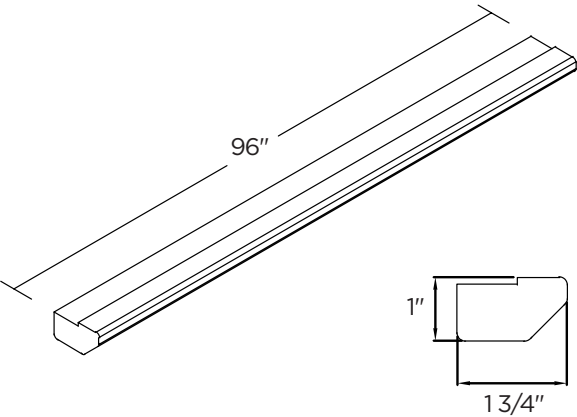


COLOR-MATCHED ACCESSORIES

DECORATIVE LIGHT VALANCE MOLDING

Not available for Glenwood-Burnt Walnut
& Mojavi Oak

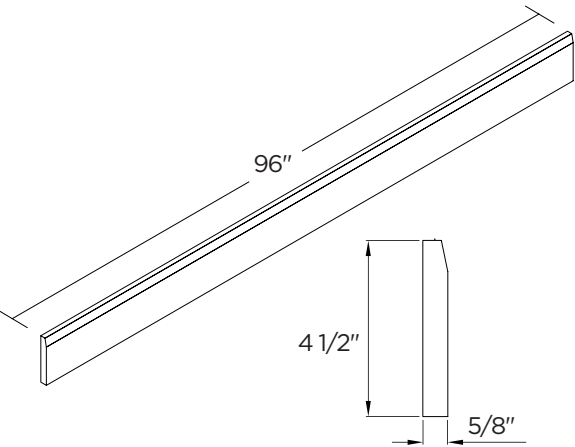
96 x 1 x 1 3/4"	DLV96
-----------------	-------



BASE MOLDING

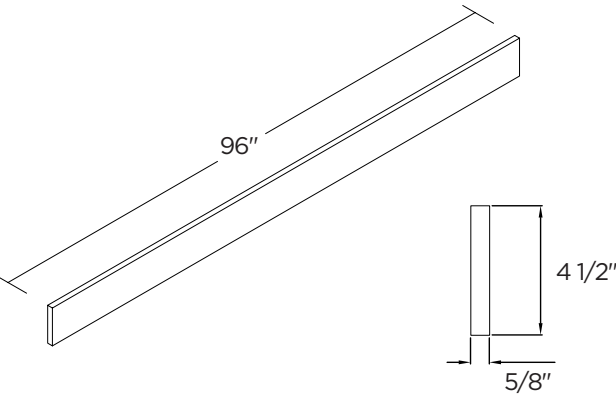
Not available in Glenwood-Burnt Walnut
& Mojavi Oak

96 x 5/8 x 4 1/2"	BM96
-------------------	------



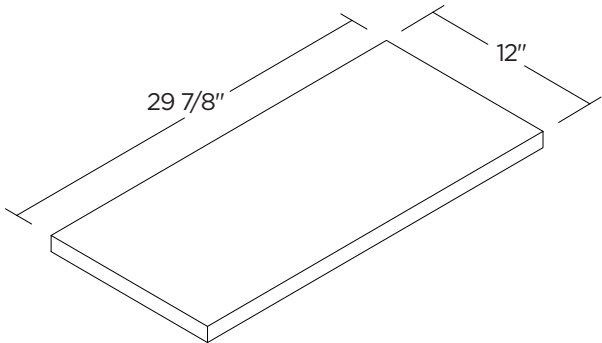
TOE KICK

96 x 5/8 x 4 1/2"	TK96
-------------------	------



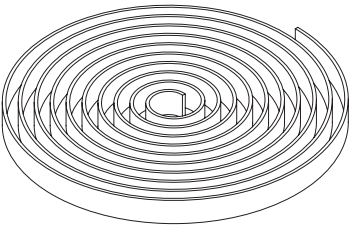
FLOATING SHELF

30 x 12 x 1 1/2"	FS30
------------------	------



EDGE BANDING

35' Roll	ET35
----------	------

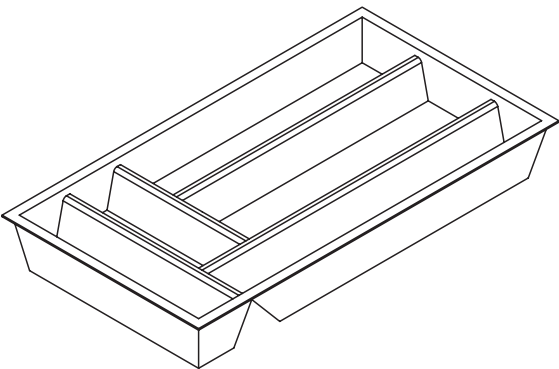


INTERIOR ACCESSORIES AND HARDWARE

CUTLERY TRAY
FOR 15" DRAWER

15 x 24"

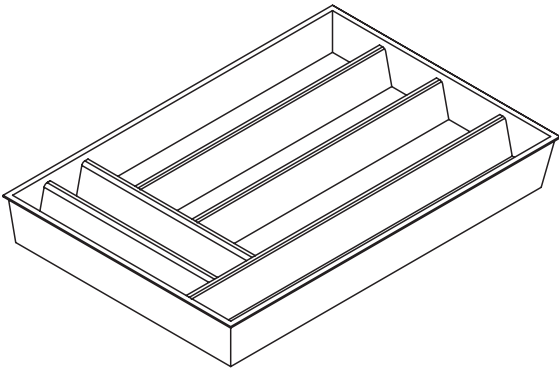
CT15



CUTLERY TRAY
FOR 18" DRAWER

18 x 24"

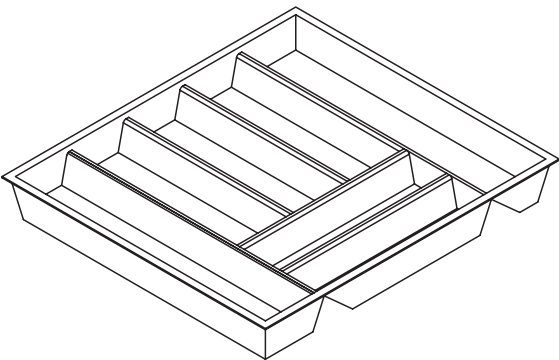
CT18



CUTLERY TRAY
FOR 24" DRAWER

24 x 24"

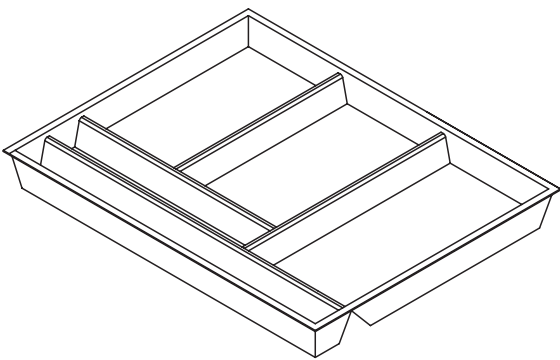
CT24



CUTLERY TRAY
FOR 30" DRAWER

30 x 24"

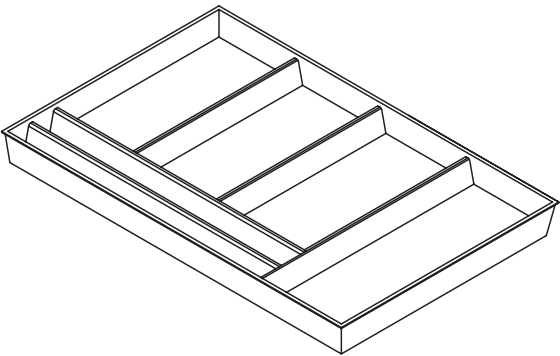
CT30



CUTLERY TRAY
FOR 36" DRAWER

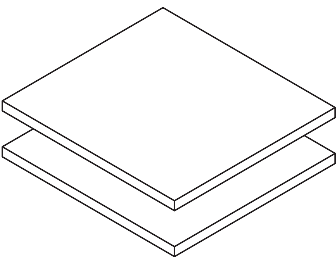
36 x 24"

CT36



SHELVING
FOR 14" DEEP CABINETS

- PACK OF 2



9 x 3/4"

SHL-914

12 x 3/4"

SHL-1214

15 x 3/4"

SHL-1514

18 x 3/4"

SHL-1814

21 x 3/4"

SHL-2114

24 x 3/4"

SHL-2414

27 x 3/4"

SHL-2714

30 x 3/4"

SHL-3014

33 x 3/4"

SHL-3314

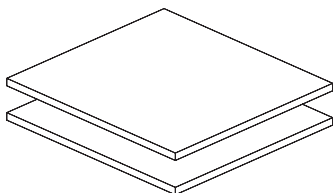
36 x 3/4"

SHL-3614

INTERIOR ACCESSORIES AND HARDWARE

SHELVING FOR 24" DEEP CABINETS

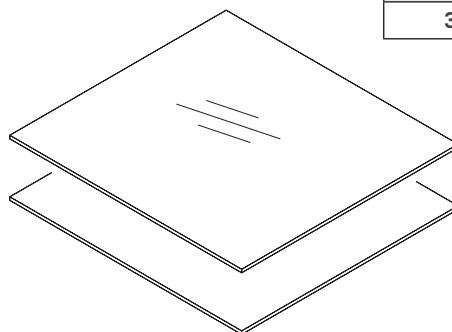
- PACK OF 2



9 x 3/4"	SHL-924
12 x 3/4"	SHL-1224
15 x 3/4"	SHL-1524
18 x 3/4"	SHL-1824
21 x 3/4"	SHL-2124
24 x 3/4"	SHL-2424
27 x 3/4"	SHL-2724
30 x 3/4"	SHL-3024
33 x 3/4"	SHL-3324
36 x 3/4"	SHL-3624

GLASS SHELVING FOR 14" DEEP CABINETS

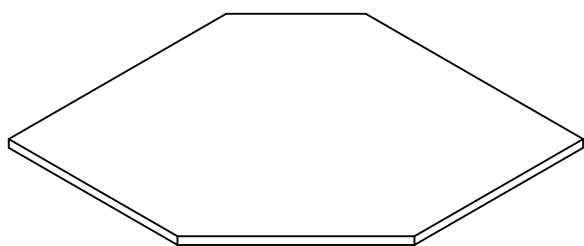
- PACK OF 2



15 x 1/4"	GSHL-1514
18 x 1/4"	GSHL-1814
30 x 1/4"	GSHL-3014
36 x 1/4"	GSHL-3614

SHELF FOR WALL DIAGONAL CORNER CABINET

24" SHL-2424 CORNER



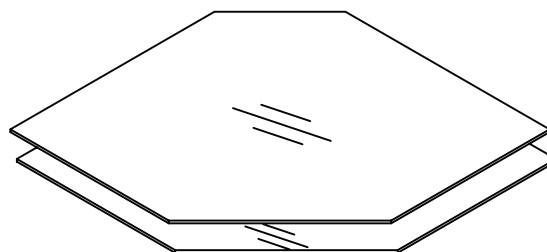
All standard interior shelving is 3/4" thick.

All glass interior shelving is 1/4" thick tempered glass.

GLASS SHELVING FOR WALL DIAGONAL CORNER CABINET

CORNER - PACK OF 2

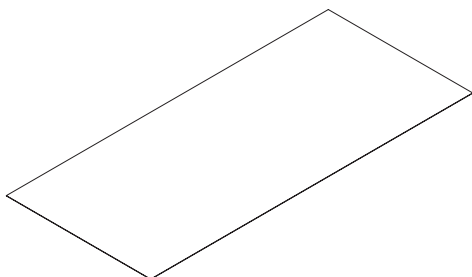
24" GSHL-2424C



DRAWER MAT

Must be trimmed by installer

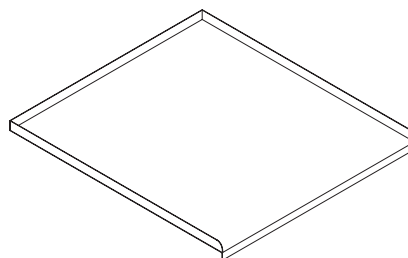
46 x 24" DM46



UNDER SINK MAT

30 x 24" SBM30

36 x 24" SBM36

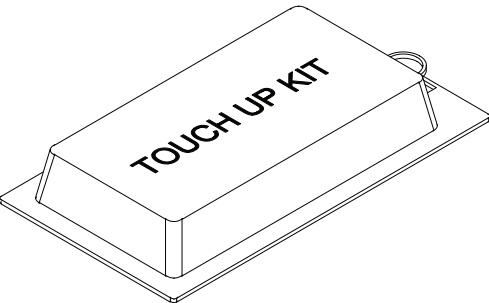


INTERIOR ACCESSORIES AND HARDWARE

TOUCH-UP KIT (TUK)

4pc

TUK



INNER DRAWER KIT FOR 14" DEEP CABINETS

15 x 3 3/8"

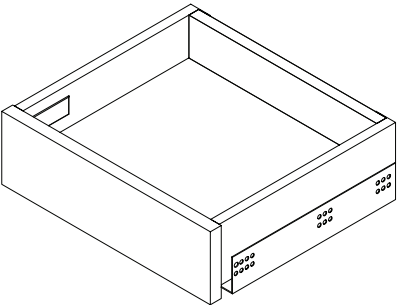
DK1514

18 x 3 3/8"

DK1814

24 x 3 3/8"

DK2414



INNER DRAWER KIT FOR 24" DEEP CABINETS

12 x 3 3/8"

DK1224

15 x 3 3/8"

DK1524

18 x 3 3/8"

DK1824

21 x 3 3/8"

DK2124

24 x 3 3/8"

DK2424

27 x 3 3/8"

DK2724

30 x 3 3/8"

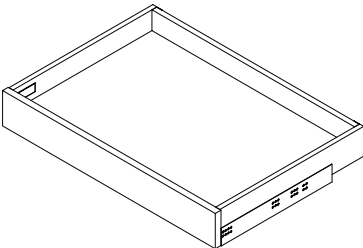
DK3024

33 x 3 3/8"

DK3324

36 x 3 3/8"

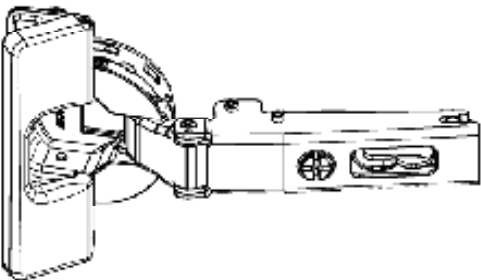
DK3624



110 DEGREE HINGE

Used for standard doors

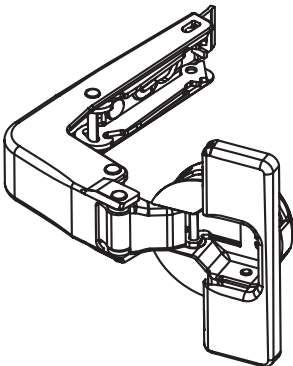
HIN110



110 DEGREE BLIND CORNER HINGE

For use with blind corner cabinets

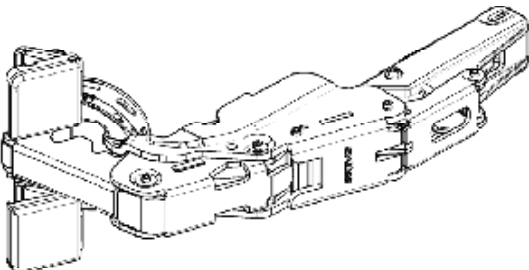
HINBC



155 DEGREE HINGE

Must be used when adding interior drawers behind cabinet doors

HIN155



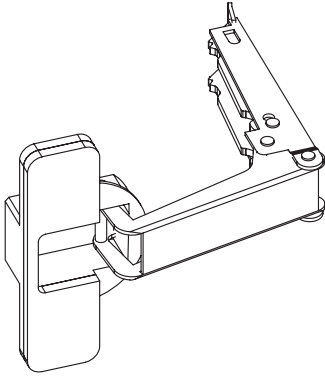
All hinges are available in sets of 2.

INTERIOR ACCESSORIES AND HARDWARE

PIE-CUT HINGE

Used to connect BC36 door sets together

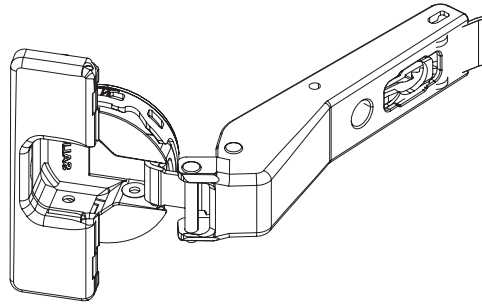
HINPC



DIAGONAL CORNER WALL HINGE

For use with diagonal wall corner cabinets

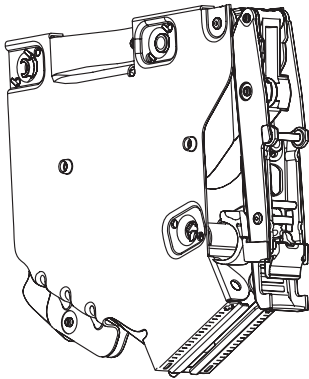
HIN45



HORIZONTAL LIFT-UP HINGE

Used to create lift-up doors

HINLU



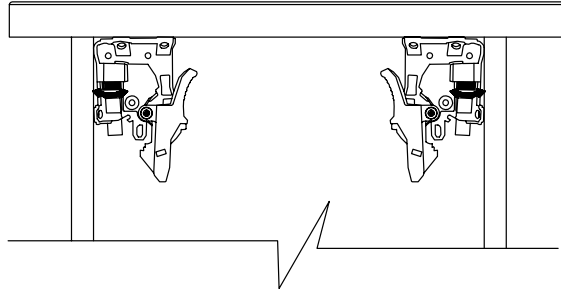
All hinges are available in sets of 2.

CABINET ADJUSTMENTS

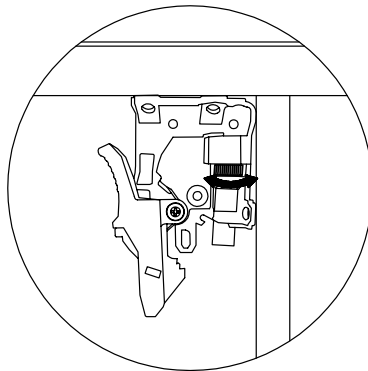
DRAWER FRONT ADJUSTMENT

If you need to adjust your drawer front/back, please follow the below instructions.

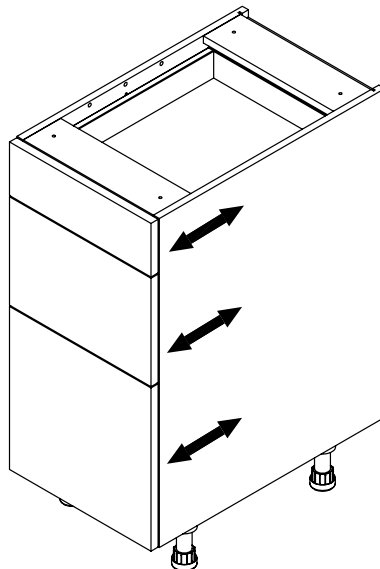
Front/Back Adjustment



Drawer Box Bottom View



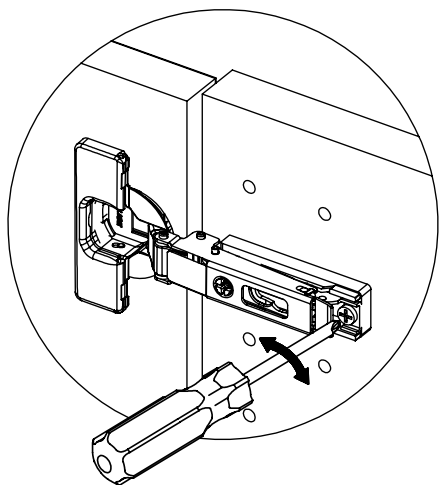
Front/Back Adjustment



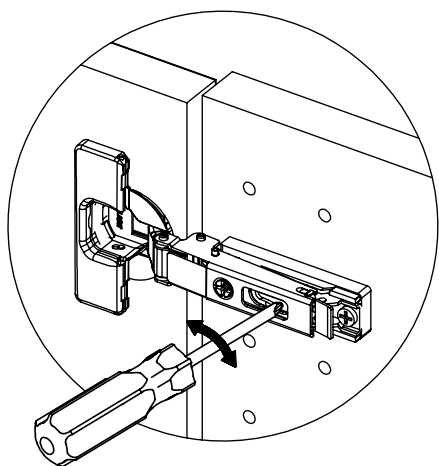
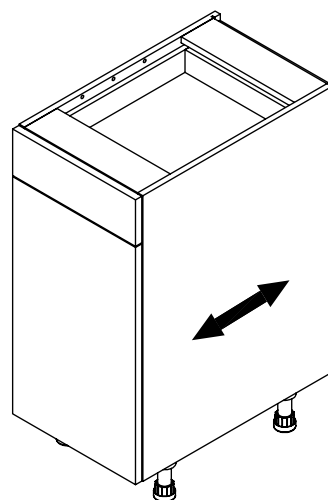
CABINET ADJUSTMENTS

DOOR ADJUSTMENT

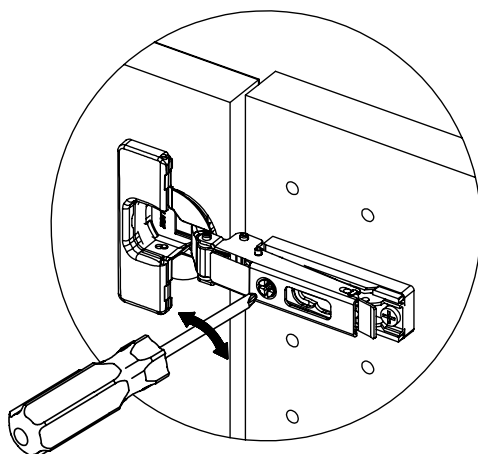
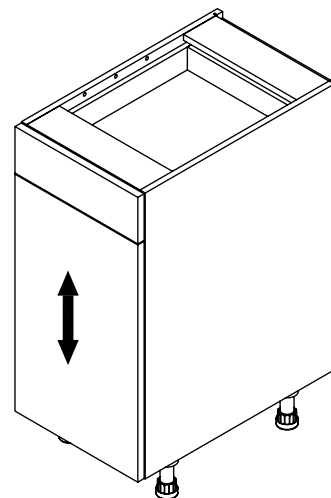
If you need to adjust your door front/back, up/down or left/right, please follow the below instructions.



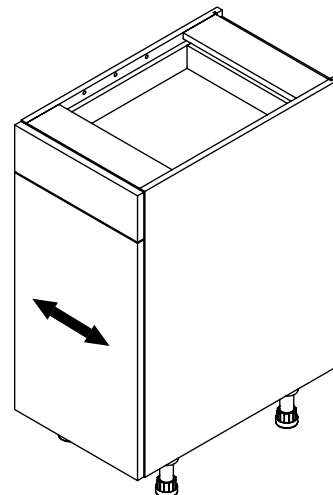
**Front/Back
Adjustment**



**Up/Down
Adjustment**



**Left/Right
Adjustment**



QUALITY & CARE GUIDE

QUALITY AND CARE GUIDE

Studio Design cabinetry is hand-crafted from the finest materials. Our fine finishes are very durable and moisture resistant, but they are not moisture-proof. Care must be taken to ensure durability for a lifetime. Use the following guidelines to assist you in maintaining the beauty of your new cabinetry.

When the installation is complete, vacuum and wipe down all interiors and exteriors with a soft dampened cloth to remove all dust. Pay special attention to the drawer glides – dust and wood particles should be removed to ensure your glides slide smoothly.

The high-quality finish of your cabinetry is designed to withstand daily use. All surfaces may be cleaned with a soft dampened cloth and warm water. For a difficult situation, use a soft dampened cloth with mild dish soap (not detergent). After cleaning, dry immediately with another soft dry cloth. Do not use harsh chemicals or ammonia-based products as they may cause discoloration of the finish.

It is important to wipe up spills from your cabinetry as they occur. Give special attention to the product around the sink and dishwasher. Avoid draping damp or wet dish towels over the doors of the sink base cabinet.

Prolonged exposure to spills, including food, oil, grease, water, coffee, tea, food colorings, and/or other liquids may cause permanent discoloration or damage to the finish. Studio Design's Lifetime Limited Warranty does not apply in cases where the product has been exposed to the above elements, thus resulting in damage to the product.

DO'S AND DON'TS

CLEANING PRODUCTS TO AVOID

The following cleaning products are to be avoided as damage may occur:

- Harsh detergents, strong soaps, abrasive cleaning products such as tub and sink cleansers, scouring powder, scouring pads, steel wool or self-polishing waxes.
- Sponges or dishcloths. They may contain particles that could scratch your cabinets, or they may contain food and oil residue or remnants of harsh cleaning solutions.
- Solvent-based or petroleum-based products such as mineral spirits, nail-polish removers or paint thinners.
- Ammonia or cleaning products that include ammonia.
- Bleach or cleaning products that include bleach.
- Silicone-based cleaning, waxing, or polishing products.

QUALITY & CARE GUIDE

WAXING AND POLISHING

Waxing is not required or recommended. Over time, waxing and polishing compounds may build up on the surface of your cabinets and cause a hazy, streaky or yellowed appearance. This wax build-up is very difficult to remove.

CLEANING GLASS DOORS

Extra care is required when cleaning glass doors. Spray an ammonia-free glass cleaner on a clean, soft, lint-free cloth or paper towel. Do not spray cleaner directly on the glass. It could seep behind the window dividers and cause damage.

AVOID HEAT DAMAGE

The heat generated when using an oven's self-cleaning feature is much greater than during normal cooking. If this heat escapes from the oven, it can damage your cabinets. While this is a rare circumstance, you can minimize the risk of cabinet damage by removing cabinet doors and drawers nearest the oven before using its self-cleaning feature.

AVOID LIGHT DAMAGE

Exposure to direct sunlight tends to darken the color of natural wood products. Sunlight can also fade painted MDF and laminated surfaces. You should consider draperies or blinds to shield your cabinets from direct sunlight.

WARRANTY

Limited Lifetime Warranty

All products must be inspected immediately upon receipt for any physical damage, missing boxes or components. Any visible damage to the goods or missing packages must be noted to the carrier and marked on the bill of lading. These claims must be submitted within 14 days of receipt.

What This Warranty Covers:

The manufacturer warrants its products to be free from substantial defects in materials and workmanship from the original date of purchase under normal home use. This warranty is offered only to the original consumer purchaser and may not be transferred. The manufacturer is only responsible for the actual purchase price.

How Long the Warranty Lasts:

Coverage for all wall cabinets, base cabinets, pantry cabinets, door fronts, drawer fronts, shelves, cover panels, fillers, moldings, hinges, drawer parts (rails and soft-close mechanisms), adjustable feet and storage accessories are warranted to the original purchaser for as long as they own their home. This warranty is not transferable.

What the manufacturer will do under the warranty:

During the warranty period, The manufacturer at its discretion, will repair or replace any part or product that proves to have substantial defects in materials or workmanship, or the manufacturer will provide an equivalent replacement product. The manufacturer reserves the right to change specifications in design and materials without notice and with no obligation to replace products that were previously manufactured.

Implied Warranties:

The manufacturer disclaims any implied warranty of merchantability, and there are no warranties that extend beyond the descriptions on the face hereof. If any implied warranty arises under applicable law, then any and all implied warranties are limited in duration to the duration of this written warranty to the extent allowed by applicable law. Some jurisdictions do not allow exclusions or limitations of incidental or consequential damages or exclusions or limitations of implied warranties, therefore, the above limitations or exclusions may not apply to you. This warranty gives you specific legal rights and you may also have other rights which vary from jurisdiction to jurisdiction.

Aging, Manufacturing, Natural Characteristics and Appearing in Printed Materials:

Because of the varying natural characteristics of wood and the effects of ageing, product shown in displays and/or printed materials (such as product photos printed in brochures, flyers, catalogs, etc.) will not be an exact match to the cabinetry you will receive. Depending on the wood grain characteristics, the age of a sample and the environment of the retail showroom, samples will show some degree of variation from a new product. In addition, you should not expect all doors, drawer fronts, cover panels, trim or molding to match exactly in either finish or grain. Variation in wood grain is normal and unavoidable. In addition, it is not possible to exactly match our colors in printed materials. Therefore, you should view the actual samples when making your color selection. Depending on the wood grain characteristics, the age of a sample and the environment of the retail showroom, samples will show some degree of variation from a new product. In addition, you should not expect all doors, drawer fronts, cover panels, trim or molding to match exactly in either finish or grain. Variation in wood grain is normal and unavoidable. In addition, it is not possible to exactly match our colors in printed materials. Therefore, you should view the actual samples when making your color selection.

WARRANTY

What This Warranty Does Not Cover:

This warranty does not cover any problems or damage which result from improper transportation, improper installation, mishandling, misuse, abuse, neglect, abnormal use, commercial use, improper maintenance, unauthorized repairs, accidents, or acts of God, such as hurricanes, fire, earthquakes or floods. The warranty and any applicable implied warranties do not cover incidental or consequential damages arising from any defects in the product such as labor charges for installation or removal of the product or any associated products. The manufacturer is not responsible for any installation charges. This warranty does not cover defects or damage caused by normal wear and tear, alterations, environmental conditions, humidity absorption, or mold. In addition, variations in wood grain, finish color or ageing are not considered defects and are not covered by this warranty.

Disclaimers and Rights:

The manufacturer disclaims any implied warranty of merchantability, and there are no express warranties other than those set forth herein. Any warranty implied by state law (whether of merchantability or fitness for a particular use or otherwise) shall be effective for any product only for the duration of the applicable limited warranty period listed above. Some states do not allow the exclusion or limitation of incidental or consequential damages, so the above limitation or exclusion may not apply to you. This warranty gives you specific legal rights, and you may also have other rights that vary from state to state.

How to Obtain Warranty Service:

If you need replacement parts or would like to make a warranty claim, please contact our Customer Service Representative by email at studiodesigncabinets@magickwoods.com or call us at (844) 877-0002.

All warranty claims must include the model number of the product, a copy of the original receipt, and the nature of the problem. In addition, the manufacturer may at its discretion require inspection of the installation site, photography, or authorize the prepaid return of the claimed defective part. Merchandise not pre-approved for return will not be accepted and the associated claim not accepted. If upon inspection you find your product is damaged or missing parts, it is not necessary to return the unit to the store of purchase. Please contact the manufacturer.

MINNESOTA DISCLOSURE – IMPORTANT HEALTH NOTICE

Manufacturer's Required Minnesota Disclosure – Important Health Notice

Some of the building materials used in this home (or these building materials) emit formaldehyde. Eye, nose, and throat irritation, headache, nausea and a variety of asthma-like symptoms, including shortness of breath, have been reported as a result of formaldehyde exposure. Elderly persons and young children, as well as anyone with a history of asthma, allergies, or lung problems, may be at greater risk. Research is continuing on the possible long-term effects of exposure to formaldehyde.

Reduced ventilation may allow formaldehyde and other contaminants to accumulate in the indoor air. High indoor temperatures and humidity raise formaldehyde levels. When a home is to be located in areas subject to extreme summer temperatures, an air-conditioning system can be used to control indoor temperature levels. Other means of controlled mechanical ventilation can be used to reduce levels of formaldehyde and other indoor air contaminants.

If you have any questions regarding the health effects of formaldehyde, consult your doctor or local health department.